

2010

ASEC INDUSTRIES PTE LTD

No. 1 Upper Aljunied Link,
#08-02, Joo Seng Warehouse Block A, Singapore 367901

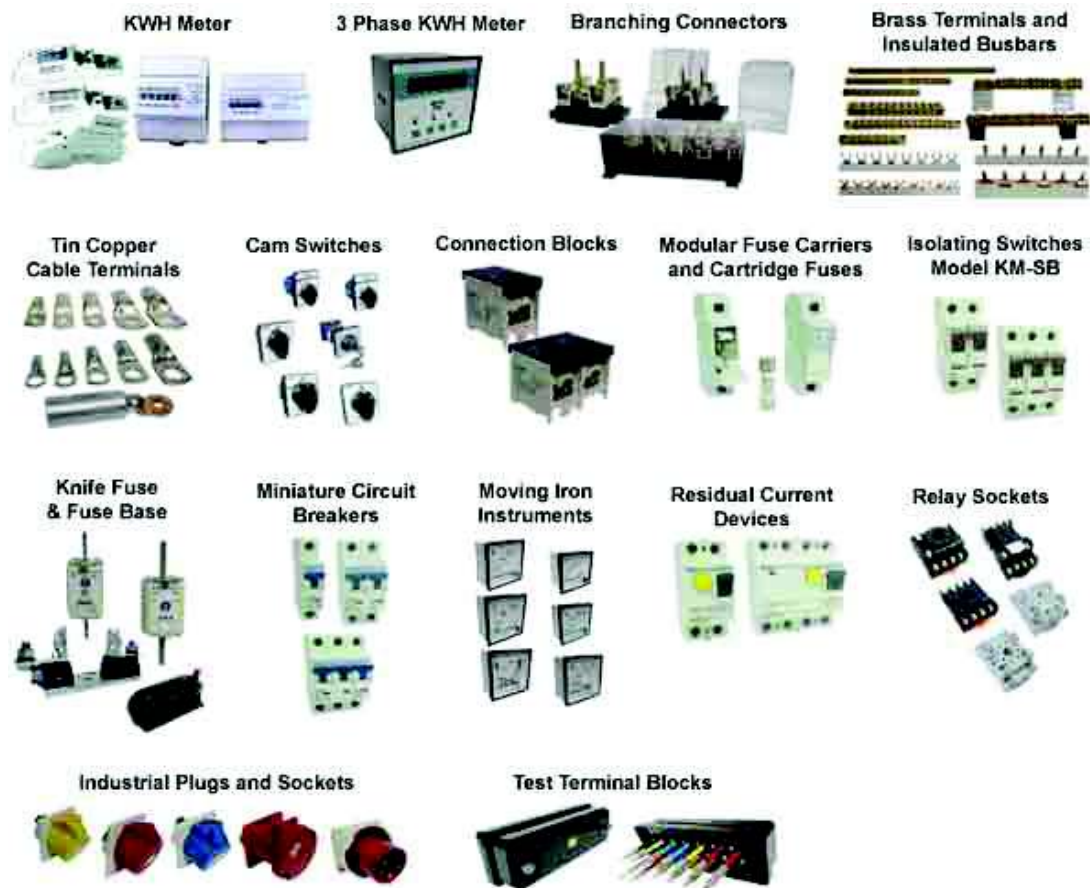
TEL: (65) 6383 4368 / 6284 2051

FAX: (65) 6383 4369

Email: shirleytan@asec.com.sg

Email: sales@asec.com.sg

Website: www.asec.com.sg



[CABLE ACCESSORIES CATALOGUE]

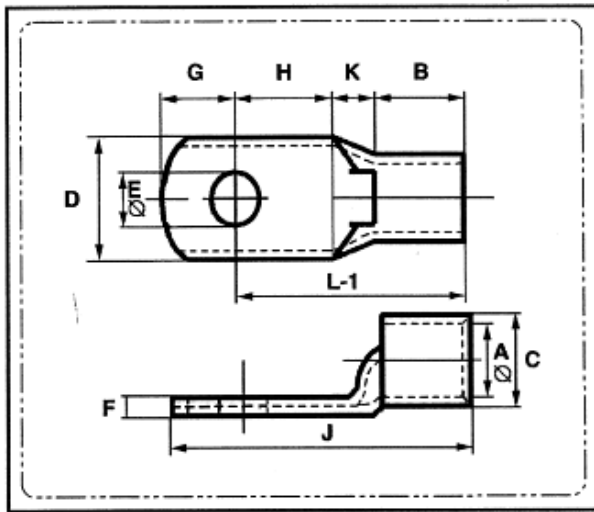
Specification subject to change without prior notice

Table of Contents

Contents

Cable Lug 1.5mm to 16mm	3
Cable Lug 25mm to 1000m	4
Cable Link	5
Long Barrel Lug.....	6
BI- Connector	7
High Tension Clamp & Gland	8
Tap Off Connector (C – Connector).....	9
Double Hole Lug	10
Non Insulated Pin Lug	11
JIS Lug 1.25mm to 14mm	12
JIS Lug 22mm to 100mm.....	13
Insulated Lug	14
Insulated Lug	15
Cable Tie Colour	16
Cable Tie Nylon & Stainless Steel.....	17
Stainless Steel Band & Buckle	18
Brass Nickel Plated Cable Gland IP68.....	19
A2 & E1W Brass Nickel Plated Cable Gland	20
Brass Nickel Plated Reducer & Enlarger.....	21
Marker & Marker Strap.....	22
Marker System for Terminal Block.....	23
Marker For Terminal & Cable.....	24
Terminal Block.....	25
TC Terminal Block.....	26
BA Terminal Block	27
Sleeves	28
Cast Resin Straight Joint with Moulded Casing.....	29
Cast Resin Straight Branching & T-Shape Joints	30
Heat Shrink.....	31
Spiral Wrapping & Cable Tie Base.....	32

Cable Lug 1.5mm to 16mm



Specifications

Conductivity : 99.25% IACS
 Resistivity : 0.0172 ohm.mm²/mm
 at 20°C

Tin Coating

Thickness : 7 to 10 microns.
 Hardness : 60 Hv.
 Tensile Strength
 (after crimping) : 40 N/mm²

CABLE SQ.MM	STUD HOLE SIZE	DIMENSIONS (mm)										PRODUCT CODE NO.
		E	A	C	D	F	G	H	K	B	L-1	
1.5	5.2	1.8	3.7	8.0	1.0	4	5	2	5	12	16	UL 1.5-5
1.5	6.5	1.8	3.7	10.0	0.8	4	5	2	5	13	18	UL 1.5-6
2.5	4.2	2.4	4.0	8.0	1.0	4	5	2	7	14	18	UL 2.5-4
2.5	5.2	2.4	4.0	10.0	0.8	5	6	2	7	15	20	UL 2.5-5
2.5	6.5	2.4	4.0	10.0	0.8	5	6	2	7	15	20	UL 2.5-6
4	5.2	3.1	4.8	10.0	1.0	5	6	2	7	15	20	UL 4-5
4	6.5	3.1	4.8	10.0	1.0	5	6	2	7	15	20	UL 4-6
6	5.2	3.8	5.5	10.0	1.2	5	6	3	9	18	23	UL 6-5
6	6.5	3.8	5.5	12.0	1.0	6	9	3	9	21	27	UL 6-6
6	8.4	3.8	5.5	12.0	1.0	6	9	3	9	21	27	UL 6-8
6	10.5	3.8	5.5	16.0	1.0	9	10	3	9	21	32	UL 6-10
10	6.5	4.5	6.2	12.0	1.2	6	7	3	9	19	25	UL 10-6
10	8.4	4.5	6.2	12.0	1.2	6	9	3	9	21	27	UL 10-8
10	10.5	4.5	6.2	16.0	1.2	9	10	3	9	23	32	UL 10-10
16	6.5	5.4	7.1	12.0	1.4	7	7	4	14	23	30	UL 16-6
16	8.4	5.4	7.1	12.0	1.4	7	7	4	14	25	32	UL 16-8
16	10.5	5.4	7.1	12.0	1.4	7	7	4	14	25	32	UL 16-10

Specification subject to change without prior notice

Page 3

ASEC INDUSTRIES PTE LTD

No. 1 Upper Aljunied Link #08-02, Joo Seng Warehouse Block A, Singapore 367901

TEL: (65) 6383 4368 / 6284 2051

FAX: (65) 6383 4369

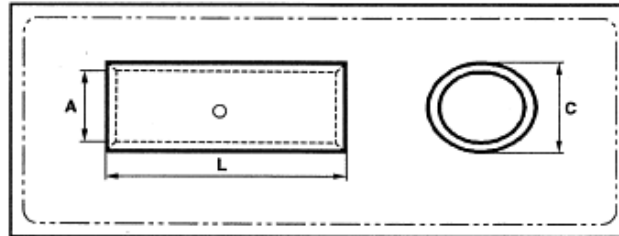
Email: shirleytan@asec.com.sg

Website: www.asec.com.sg

Cable Lug 25mm to 1000m

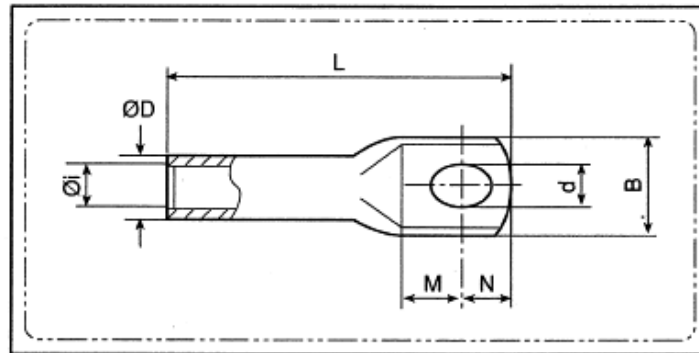
CABLE SQ.MM	STUD HOLE SIZE	DIMENSIONS (mm)										PRODUCT CODE NO.	
	E	A	C	D	F	G	H	K	B	L-1	J		
25	6.5	6.8	8.8	13.0	2.0	7	7	4	14	23	30	UL	25-6
25	8.4	6.8	8.8	13.5	1.4	10	11	4	14	27	37	UL	25-8
25	10.5	6.8	8.8	15.0	1.4	10	11	4	14	27	37	UL	25-10
25	13.0	6.8	8.8	18.0	1.4	10	11	4	14	27	37	UL	25-12
35	6.5	8.2	10.6	15.3	2.4	9	9	5	14	26	35	UL	35-6
35	8.4	8.2	10.6	15.0	2.4	9	9	5	14	26	35	UL	35-8
35	10.5	8.2	10.6	18.0	2.0	10	11	5	14	28	38	UL	35-10
35	13.0	8.2	10.6	18.0	2.0	10	11	5	14	28	38	UL	35-12
50	8.4	9.5	12.4	15.0	2.9	10	11	6	16	33	43	UL	50-8
50	10.5	9.5	12.4	17.8	2.9	10	11	6	16	33	43	UL	50-10
50	13.0	9.5	12.4	17.8	2.9	10	11	6	16	33	43	UL	50-12
70	8.4	11.2	14.7	18.0	3.5	12	13	7	18	38	50	UL	70-8
70	10.5	11.2	14.7	21.0	3.5	12	13	7	18	38	50	UL	70-10
70	13.0	11.2	14.7	21.0	3.5	12	13	7	18	38	50	UL	70-12
70	17	11.2	14.7	28	3.5	12	13	7	18	38	50	UL	70-16
95	8.4	13.5	17.4	22.5	3.9	13	13	9	20	42	55	UL	95-8
95	10.5	13.5	17.4	25	3.9	13	13	9	20	42	55	UL	95-10
95	13.0	13.5	17.4	25	3.9	13	13	9	20	42	55	UL	95-12
95	17	13.5	17.4	28	3.9	13	13	9	20	42	55	UL	95-16
120	10.5	15	19.4	23.5	4.4	14	14	10	22	46	60	UL	120-10
120	13	15	19.4	28	4.4	14	14	10	22	46	60	UL	120-12
120	17	15	19.4	28	4.4	16	16	10	22	48	64	UL	120-16
150	10.5	16.5	21.2	24	4.7	16	16	11	26	53	69	UL	150-10
150	13	16.5	21.2	30	4.7	16	16	11	26	53	69	UL	150-12
150	17	16.5	21.2	30	4.7	16	16	11	26	53	69	UL	150-16
185	13	18.5	23.5	34	5	17	17	12	32	61	78	UL	185-12
185	17	18.5	23.5	34	5	17	17	12	32	61	78	UL	185-16
240	-	21	26.5	38	5.5	-	-	14	38	-	92	UL	240-BL
240	13	21	26.5	38	5.5	20	20	14	38	72	92	UL	240-12
240	17	21	26.5	38	5.5	20	20	14	38	72	92	UL	240-16
240	21	21	26.5	38	5.5	20	20	14	38	72	92	UL	240-20
300	-	23.5	30	43	6.5	-	-	15	42	-	101	UL	300-BL
300	13	23.5	30	43	6.5	22	22	15	42	79	101	UL	300-12
300	17	23.5	30	43	6.5	22	22	15	42	79	101	UL	300-16
300	21	23.5	30	43	6.5	22	22	15	42	79	101	UL	300-20
400	-	26.5	35	50.1	8	-	-	18	44	-	114	UL	400-BL
400	13	26.5	35	50.1	8	26	26	18	44	88	114	UL	400-12
400	17	26.5	35	50.1	8	26	26	18	44	88	114	UL	400-16
400	21	26.5	35	50.1	8	26	26	18	44	88	114	UL	400-20
500	-	30	39	56	9	-	-	20	48	-	124	UL	500-BL
500	17	30	39	56	9	28	28	20	48	96	124	UL	500-16
500	21	30	39	56	9	28	28	20	48	96	124	UL	500-20
630	-	35	45	65	10	-	-	22	56	-	144	UL	630-BL
630	17	35	45	65	10	33	33	22	56	111	144	UL	630-16
630	21	35	45	65	10	33	33	22	56	111	144	UL	630-20
800	-	39	50.6	73.5	11.6	40	40	17	78	-	175	UL	800-BL
800	17	39	50.6	73.5	11.6	40	40	17	78	135	175	UL	800-16
1000	-	43	56.2	81	13.2	50	50	20	90	-	210	UL	1000-BL
1000	17	43	56.2	81	13.2	50	50	20	90	160	210	UL	1000-16

**Finished-Electro Tinned to BS 1872 (1984)
Copper Conductivity 99.25% I.A.C.S.
Copper to BS 1977 & DIN 46235**



Short-Barrel In-line Connectors				
CABLE SIZE SQ.MM	DIMENSIONS (mm)			PROD. CODE NO
	A	C	L	
1.5	1.8	3.7	15	UL - 1.5
2.5	2.4	4	18	UL - 2.5
4	3.1	4.8	18	UL - 4
6	3.8	5.5	20	UL - 6
10	4.5	6.2	23	UL - 10
16	5.4	7.1	25	UL - 16
25	6.8	8.8	35	UL - 25
35	8.2	10.6	38	UL - 35
50	9.5	12.4	42	UL - 50
70	11.2	14.7	47	UL - 70
95	13.5	17.4	47	UL - 95
120	15	19.4	65	UL - 120
150	16.5	21.2	65	UL - 150
185	18.5	23.5	67	UL - 185
240	21	26.5	80	UL - 240
300	23.5	30	89	UL - 300
400	26.5	35	85	UL - 400
500	30	39	100	UL - 500
630	35	45	110	UL - 630
800	39	50.6	230	UL - 800
1000	43	56.2	230	UL - 1000

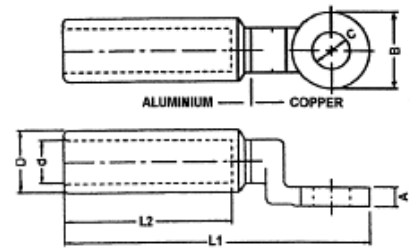
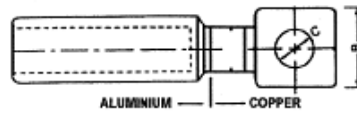
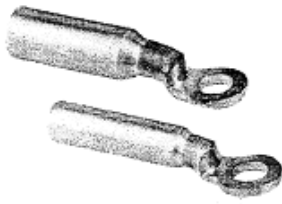
Long Barrel Lug



ALL DIMENSIONS IN (MM)

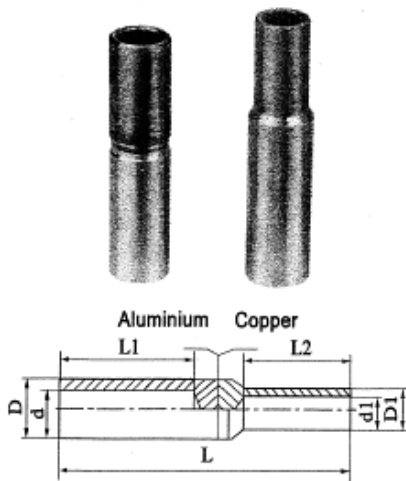
SIZE (mmsq ²)	(ID)	(OD)	(B)	(M)	(N)	(L)	(d)
ULB 16 - M 10	5.4	7.5	15	11	10	44	10.5
ULB 25 - M 10	6.8	9	18	11	10	55	10.5
ULB 35 - M 12	8.2	11	19	14	12	57	13.2
ULB 50 - M 12	9.5	13	20	14	12	68	13.2
ULB 70 - M 12	11.2	15	21	14	12	75	13.2
ULB 95 - M 12	13.5	17.8	25	14	12	81.5	13.2
ULB 120 - M 12	15	19.5	28	14	12	87	13.2
ULB 150 - M 12	16.5	21.5	30	16	14	98	13.2
ULB 185 - M 12	18.5	24	35	16	14	112	13.2
ULB 240 - M 12	21	26.5	38	18	16	113	13.2
ULB 300 - M 12	23.5	30.5	44	20	16	133.5	13.2
ULB 400 - M 16	26.8	35	50.1	22	19	140	17
ULB 500 - M 16	30	39	56	22	19	147	17
ULB 630 - M 16	35	45	62	22	19	159	17

BI- Connector



Catalogue No.	L1	L2	D	d	B	A	C
UBM-25	85	47	16	6.5	20	4.0	11
UBM-35	85	47	16	8.5	20	4.0	11
UBM-50	91	50	20	9.5	24	5.0	13
UBM-70	91	50	20	11.0	24	5.0	13
UBM-95	91	50	20	12.5	24	5.0	13
UBM-120	115	60	25	13.7	30	6.0	13
UBM-150	115	60	25	15.5	30	6.0	13
UBM-185	118	60	32	17.0	35	7.0	13
UBM-240	118	60	32	19.5	35	7.0	13
UBM-300	153	93	40	23.3	36	7.5	17
UBM-400	153	93	40	26.0	36	7.5	17
UBM-500	200	94	47	29.1	60x60	10.0	17
UBM-630	200	94	47	32.5	60x60	10.0	17
UBM-800	260	120	60	37.5	80x80	10.0	BL
UBM-1000	260	120	60	42	80x80	10.0	BL

GTL Bimetallic Connecting Tubes



Type	Dimensions (mm)						
	d1	D1	d	D	L1	L2	L
GTL-16	5	9	6	10	35	30	70
GTL-25	6	10	7	12	35	30	80
GTL-35	7	11	8.5	14	42	30	85
GTL-50	8.5	13	9.5	16	42	32	90
GTL-70	9.5	15	11.5	18	50	38	95
GTL-95	11.5	17	13.5	21	50	40	100
GTL-120	13.5	19	15	23	55	42	107
GTL-150	15	21	17	25	55	44	120
GTL-185	17	23	18.5	28	60	46	125
GTL-240	19	26	21	30	60	54	130
GTL-300	21	28	23	34	65	56	145
GTL-400	23	30	27	45	70	60	155
GTL-500	27	34	29	47	75	65	165
GTL-630	29	38	35	54	80	70	180

Specification subject to change without prior notice

Page 7

ASEC INDUSTRIES PTE LTD

No. 1 Upper Aljunied Link #08-02, Joo Seng Warehouse Block A, Singapore 367901

TEL: (65) 6383 4368 / 6284 2051

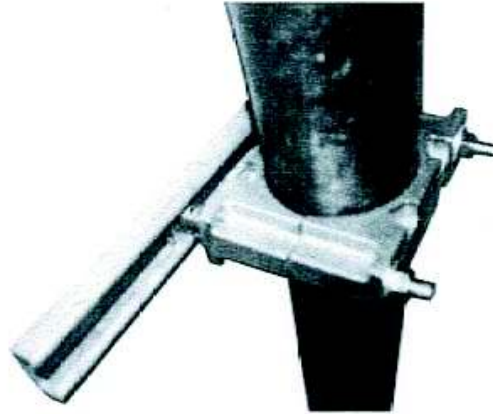
FAX: (65) 6383 4369

Email: shirleytan@asec.com.sg

Website: www.asec.com.sg

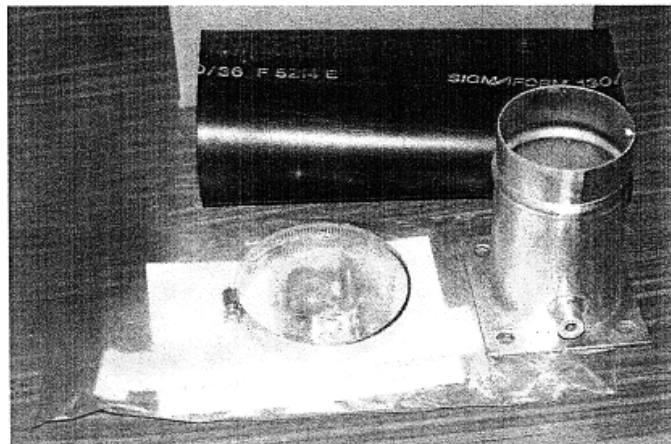
High Tension Clamp & Gland

SIZE
60 - 70 mm \varnothing
70 - 80 mm \varnothing
80 - 90 mm \varnothing
90 - 100 mm \varnothing
100 - 110 mm \varnothing

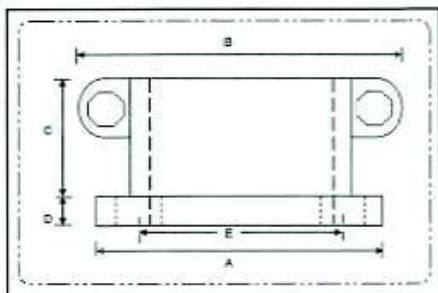


HIGH TENSION CABLE GLAND

1	Below 68mm \varnothing CPQ 105-68
2	Below 88mm \varnothing CPQ 105-88
3	Below 100mm \varnothing CPQ 105-97



DIE CAST GLAND



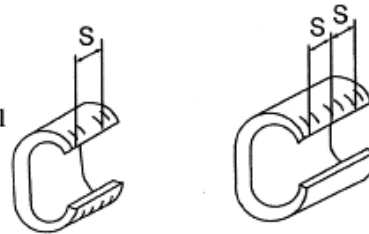
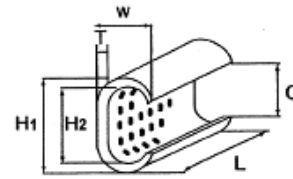
Gland come with 2 M10 bolt with 4 by M10 mounting hole

Diameter	A	B	C	D	E
80-90	120	167	66	12	95
90-100	135	187	67	13	110

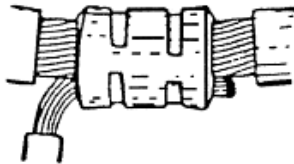
Tap Off Connector (C - Connector)

The range of C-CONNECTORS are manufactured in 'C' shaped copper section for connection of main and tap copper conductors.

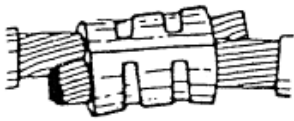
- Approved by NTT corporation
- Reliability is ensured by passing tests specified by JIS C 2810
- Suitable for connecting copper conductors in both indoor and outdoor such as wiring in building or wiring in tunnel
- Tin plated to avoid rusting



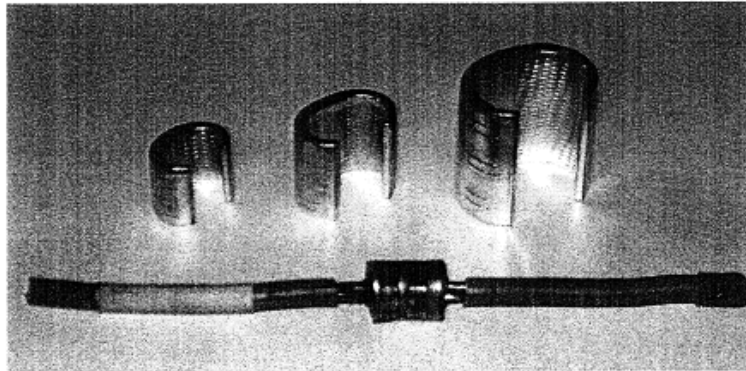
(T-11 ~ T-122) (T-154 ~ T-700)
except T-20, T-26, T-44



Branch connection



Parallel connection



Connector Size	Dimensions (mm)						Installation		Total Sectional area of applicable wire
	H1	H2	W	L	T	C	# of crimps	S	
T-11	9.5	6.3	6.2	12	1.6	4.0	2	7	7.5~11mm ²
T-16	11.8	7.8	7.8	13	2.0	5.0	2	8	11.5~16
T-20	12.8	8.4	9.7	13	2.9	5.1	1		14~20
T-26	14.7	10.2	10.9	16	3.2	6.5	1		21~26
T-44	19.0	13.4	14.4	20	4.0	8.5	1		27~44
T-60	21.0	15.4	15.1	22	4.0	9.7	2	11	45~60
T-76	24.4	17.3	17.6	22	5.0	10.8	2	11	61~76
T-98	27.8	20.8	18.8	25	5.0	13.8	2	11	77~98
T-122	29.8	22.1	21.2	26	5.5	13.5	2	12	99~122
T-154	34.0	25.7	24.4	28	6.0	17.0	3	8.5	123~154
T-190	37.0	28.5	25.4	35	6.0	17.4	3	10.5	155~190
T-240	40.0	30.2	28.5	40	7.0	19.0	3	13	191~240
T-288	44.5	34.7	31.1	45	7.0	22.3	3	14.5	241~288
T-365	47.5	37.7	34.0	50	7.0	24.8	3	16	289~365
T-450	57.0	42.5	41.0	60	10.0	28.0	3	18.5	366~450
T-560	62.0	46.0	45.0	65	11.0	31.0	3	20	451~560
T-700	68.0	51.0	49.5	70	12.0	34.0	3	21	561~700

Specification subject to change without prior notice

Page 9

ASEC INDUSTRIES PTE LTD

No. 1 Upper Aljunied Link #08-02, Joo Seng Warehouse Block A, Singapore 367901

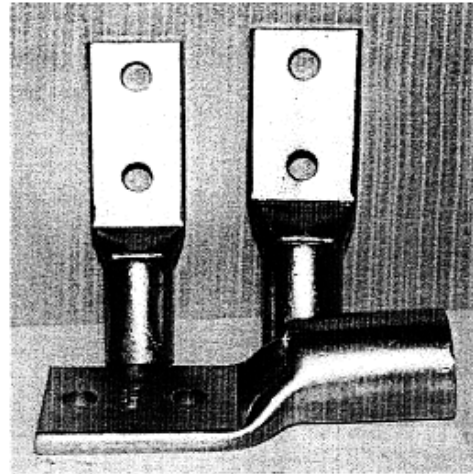
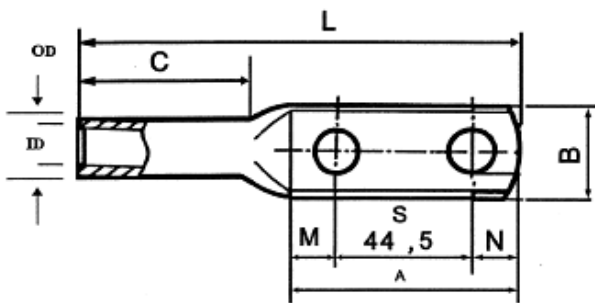
TEL: (65) 6383 4368 / 6284 2051

FAX: (65) 6383 4369

Email: shirleytan@asec.com.sg

Website: www.asec.com.sg

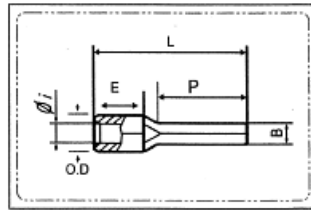
Double Hole Lug



DIMENSION (MM)

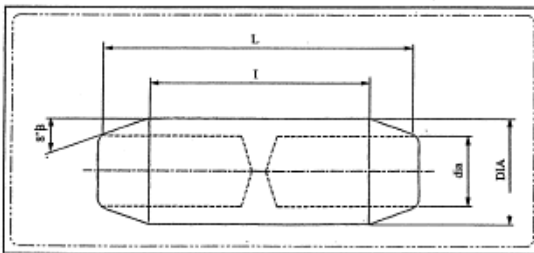
CABLE SIZE (mmsq)	STUD	ID	OD	L	S	M	N	C	B	A
D 25MM	M 12	6.8	9.5	119	44.5	18	16	36.5	21	78.5
D 35MM	M 12	8.2	11	120	44.5	18	16	36.5	21	78.5
D50MM	M 12	9.5	13	124	44.5	18	16	39.5	21	78.5
D 70MM	M 12	11.2	15	128	44.5	18	16	42	21.5	78.5
D 95MM	M 12	13.5	17.8	133.5	44.5	18	16	46	25.5	78.5
D 120MM	M 12	15	19.5	139	44.5	18	16	50	28.5	78.5
D 150MM	M 12	16.5	21.5	146	44.5	18	16	56.5	31	78.5
D 185MM	M 12	18.5	24	156	44.5	18	16	65	34	78.5
D 240MM	M 12	21	26.5	160	44.5	20	16	65	39	80.5
D 300MM	M 12	23.5	30	175	44.5	20	16	79.5	43.5	80.5
D 400MM	M 12	26.8	35	179	44.5	20	16	81	50	80.5
D 500MM	M 12	30	39	186	44.5	20	16	85.5	56	80.5
D 630MM	M 12	35	45	198	44.5	20	16	95.5	65	80.5
D 800-12	M 12	39	50.6	210	44.5	21	18	109.5	73.5	83.5
D 1000-12	M 12	43	56.2	220	44.5	21	18	116.5	81	83.5

Non Insulated Pin Lug



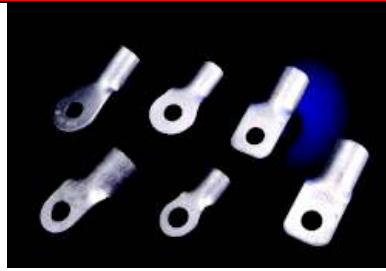
CONDUCTOR SIZE SQMM	DIMENSION (mm)					
	Øi	OD	B	P	L	E
10	4.5	6.7	4.3	12	22	8.0
16	5.8	8.2	5.5	13	26	10
25	7.0	11.1	6.8	24.5	39.0	11.2
35	8.9	12.5	8.0	24.5	39.0	12.5

FERRULE WITH CENTRE BARRIER



CABLE SIZE mm ²	NOMINAL DIMENSIONS			
	dia	DIA	I	L
35MM	8.2	11.6	40	60
50MM	9.5	13	40	60
70MM	11	15	60	80
95MM	12	17.5	60	80
120MM	14	19.4	60	85
150MM	15.5	21.5	65	90
185MM	17	24	79	115
240MM	19.2	27	79	115
300MM	21.6	30.6	79	115
400MM	27	37	84	120
500MM	29	39	120	150
630MM	34	45	125	155

JIS Lug 1.25mm to 14mm



Unit: mm	Item No.	Stud Size D	Width W	Wire Size	
				AWG	mm ²
	R1.25-3S	3.2	5.5	22-16	0.5-1.0
	R1.25-3	3.7	5.5	22-16	0.5-1.0
	R1.25-4	4.3	8.0	22-16	0.5-1.0
	R1.25-4M	4.3	6.6	22-16	0.5-1.0
	R1.25-5	5.3	8.0	22-16	0.5-1.0
	R1.25-6	6.4	11.7	22-16	0.5-1.0
	R1.25-8	8.4	11.7	22-16	0.5-1.0
	R1.25-10	10.5	13.7	22-16	0.5-1.0
	R2-3S	4.3	6.5	16-14	1.5-2.5
	R2-3	3.7	6.5	16-14	1.5-2.5
	R2-4	4.3	8.5	16-14	1.5-2.5
	R2-4M	4.3	6.6	16-14	1.5-2.5
	R2-5	5.3	9.5	16-14	1.5-2.5
	R2-6	6.4	12.0	16-14	1.5-2.5
	R2-8	8.4	12.0	16-14	1.5-2.5
	R2-10	10.5	13.7	16-14	1.5-2.5
	R5.5-4	4.3	9.5	12-10	4.0-6.0
	R5.5-5	5.3	9.5	12-10	4.0-6.0
	R5.5-6S	6.4	12.0	12-10	4.0-6.0
	R5.5-6	6.4	15.0	12-10	4.0-6.0
	R5.5-8	8.4	15.0	12-10	4.0-6.0
	R5.5-10	10.5	15.0	12-10	4.0-6.0
	R8-5S	5.3	9.0	8	10.0
	R8-5	5.3	9.0	8	10.0
	R8-6	6.4	12.0	8	10.0
	R8-8	8.4	15.0	8	10.0
	R8-10	10.5	15.0	8	10.0
	R8-12	13.0	15.0	8	10.0
	R14-5	5.3	9.5	6	16.0
	R14-6	6.4	12.0	6	16.0
	R14-8	8.4	16.0	6	16.0
	R14-10	10.5	16.0	6	16.0
	R14-12	13.0	22.0	6	16.0

Specification subject to change without prior notice

Page 12

ASEC INDUSTRIES PTE LTD

No. 1 Upper Aljunied Link #08-02, Joo Seng Warehouse Block A, Singapore 367901

TEL: (65) 6383 4368 / 6284 2051

FAX: (65) 6383 4369

Email: shirleytan@asec.com.sg

Website: www.asec.com.sg

JIS Lug 22mm to 100mm

Unit: mm	Item No.	Stud Size D	Width W	Wire Size	
				AWG	mm ²
	R22-6S	6.4	13.0	4	25
	R22-6	6.5	13.1	4	25
	R22-8S	8.4	13.0	4	25
	R22-8	8.4	16.6	4	25
	R22-10	10.5	16.6	4	25
	R22-12	13.0	22.0	4	25
	R30-8	8.4	16.5		
	R30-10	10.5	16.5		
	R38-6S	6.4	15.0	2	35
	R38-8S	8.4	15.0	2	35
	R38-8	8.4	18.5	2	35
	R38-10S	10.5	15.0	2	35
	R38-10	10.5	18.5	2	35
	R38-12	13.0	18.5	2	35
	R50-8SQ	8.4	17.3		
	R50-10SQ	10.5	17.3		
	R50-12	13.0	19.0		
	R60-8	8.4	19.0	1/0	50
	R60-8SQ	8.4	17.3	1/0	50
	R60-10	10.5	19.0	1/0	50
	R60-10SQ	10.5	17.3	1/0	50
	R60-12	13.0	19.0	1/0	50
	R60-16L	17.0	32.0	1/0	50
	R60-20L	21.0	32.0	1/0	50
	R80-8	8.4	22.2	3/0	95
	R80-8SQ	8.4	18.9	3/0	95
	R80-10	10.5	22.2	3/0	95
	R80-10SQ	10.5	18.9	3/0	95
	R80-12	13.0	22.2	3/0	95
	R80-12SQ	13.0	18.9	3/0	95
	R80-16L	17.0	32.0	3/0	95
	R80-20L	21.0	32.0	3/0	95
	R80-22L	23.0	32.0	3/0	95
	R100-8	8.4	28.5	4/0	120
	R100-8SQ	8.4	23.3	4/0	120
	R100-10	10.5	28.5	4/0	120
	R100-10SQ	10.5	23.3	4/0	120
	R100-12	13.0	28.5	4/0	120
	R100-12SQ	13.0	23.3	4/0	120
	R100-16L	17.0	32.2	4/0	120

Specification subject to change without prior notice

Page 13

ASEC INDUSTRIES PTE LTD

No. 1 Upper Aljunied Link #08-02, Joo Seng Warehouse Block A, Singapore 367901

TEL: (65) 6383 4368 / 6284 2051

FAX: (65) 6383 4369

Email: shirleytan@asec.com.sg

Website: www.asec.com.sg

Insulated Lug

RING TERMINAL



RED RING TERMINAL

TYPE	WIRE RANGE	WIRE RANGE mm ²	TYPE	WIRE RANGE	WIRE RANGE mm ²
M3	22-16	0.5-1.5	M6	22-16	0.5-1.5
M4	22-16	0.5-1.5	M8	22-16	0.5-1.5
M5	22-16	0.5-1.5	M10	22-16	0.5-1.5

BLUE RING TERMINAL

TYPE	WIRE RANGE	WIRE RANGE mm ²
M1	16-14	1.5-2.5
M4	16-14	1.5-2.5
M5	16-14	1.5-2.5
M6	16-14	1.5-2.5
M8	16-14	1.5-2.5
M10	16-14	1.5-2.5

YELLOW RING TERMINAL

TYPE	WIRE RANGE	WIRE RANGE mm ²
M3	12-10	2.5-6.0
M4	12-10	2.5-6.0
M5	12-10	2.5-6.0
M6	12-10	2.5-6.0
M8	12-10	2.5-6.0
M10	12-10	2.5-6.0

SPADE TERMINAL



RED SPADE TERMINAL

TYPE	WIRE RANGE	WIRE RANGE mm ²
M3	22-16	0.5-1.5
M4	22-16	0.5-1.5
M5	22-16	0.5-1.5
M6	22-16	0.5-1.5

BLUE SPADE TERMINAL

TYPE	WIRE RANGE	WIRE RANGE mm ²
M3	16-14	1.5-2.5
M4	16-14	1.5-2.5
M5	16-14	1.5-2.5
M6	16-14	1.5-2.5

YELLOW SPADE TERMINAL

TYPE	WIRE RANGE	WIRE RANGE mm ²
M3	12-10	2.5-6.0
M4	12-10	2.5-6.0
M5	12-10	2.5-6.0
M6	12-10	2.5-6.0
M8	12-10	2.5-6.0
M10	12-10	2.5-6.0

BLADE TERMINAL



BLADE TERMINAL

TYPE	WIRE RANGE	WIRE RANGE mm ²
RED	22-16	0.5-1.5
BLUE	16-14	1.5-2.5
YELLOW	12-10	2.5-6.0

PIN TERMINAL



PIN TERMINAL

TYPE	WIRE RANGE	WIRE RANGE mm ²
RED	22-16	0.5-1.5
BLUE	16-14	1.5-2.5
YELLOW	12-10	2.5-6.0

HOOK BLADE TERMINAL



HOOK BLADE TERMINAL

TYPE	WIRE RANGE	WIRE RANGE mm ²
RED	22-16	0.5-1.5
BLUE	16-14	1.5-2.5

PIGGY BACK DISCONNECT



PIGGY BACK DISCONNECT

TYPE	WIRE RANGE	WIRE RANGE mm ²
RED	22-16	0.5-1.5
BLUE	16-14	1.5-2.5
YELLOW	12-10	2.5-6.0

FLANGED SPADE TERMINAL



RED FLANGED SPADE TERMINAL

TYPE	WIRE RANGE	WIRE RANGE mm ²	STUD SIZE AWG
M1	22-16	0.5-1.5	6
M2	22-16	0.5-1.5	8
M3	22-16	0.5-1.5	10

BLUE FLANGED SPADE TERMINAL

TYPE	WIRE RANGE	WIRE RANGE mm ²	STUD SIZE AWG
M1	16-14	1.5-2.5	6
M2	16-14	1.5-2.5	8
M3	16-14	1.5-2.5	10

YELLOW FLANGED SPADE TERMINAL

TYPE	WIRE RANGE	WIRE RANGE mm ²	STUD SIZE AWG
M1	12-10	2.5-6.0	6
M2	12-10	2.5-6.0	8
M3	12-10	2.5-6.0	10

FEMALE DISCONNECT



RED FEMALE DISCONNECT

TYPE	WIRE RANGE	WIRE RANGE mm ²
3mm	22-16	0.5-1.5
4mm	22-16	0.5-1.5
6mm	22-16	0.5-1.5

BLUE FEMALE DISCONNECT

TYPE	WIRE RANGE	WIRE RANGE mm ²
4mm	16-14	1.5-2.5
6mm	16-14	1.5-2.5

YELLOW FEMALE DISCONNECT

TYPE	WIRE RANGE	WIRE RANGE mm ²
6mm	12-10	2.5-6.0

MALE DISCONNECT



RED MALE DISCONNECT

TYPE	WIRE RANGE	WIRE RANGE mm ²
3mm	22-16	0.5-1.5
4mm	22-16	0.5-1.5
6mm	22-16	0.5-1.5

BLUE MALE DISCONNECT

TYPE	WIRE RANGE	WIRE RANGE mm ²
4mm	16-14	1.5-2.5
6mm	16-14	1.5-2.5

YELLOW MALE DISCONNECT

TYPE	WIRE RANGE	WIRE RANGE mm ²
6mm	12-10	2.5-6.0

Insulated Lug

FULLY INSULATED FEMALE DISCONNECT



RED FULLY INSULATED FEMALE DISCONNECT

TYPE	WIRE RANGE	WIRE RANGE mm ²
3mm	22-16	0.5-1.5
4mm	22-16	0.5-1.5
6mm	22-16	0.5-1.5

YELLOW FULLY INSULATED FEMALE DISCONNECT

TYPE	WIRE RANGE	WIRE RANGE mm ²
6mm	12-10	2.5-6.0

BLUE FULLY INSULATED FEMALE DISCONNECT

TYPE	WIRE RANGE	WIRE RANGE mm ²
4mm	16-14	1.5-2.5
6mm	16-14	1.5-2.5

BULLET TERMINAL DISCONNECT



BULLET TERMINAL DISCONNECT

TYPE	WIRE RANGE	WIRE RANGE mm ²
RED	22-16	0.5-1.5
BLUE	16-14	1.5-2.5
YELLOW	12-10	2.5-6.0

RECEPTACLE DISCONNECT



RECEPTACLE DISCONNECT

TYPE	WIRE RANGE	WIRE RANGE mm ²
RED	22-16	0.5-1.5
BLUE	16-14	1.5-2.5
YELLOW	12-10	2.5-6.0

BUTT SPLICE



BUTT SPLICE

TYPE	WIRE RANGE
RED	22-16
BLUE	16-14
YELLOW	12-10

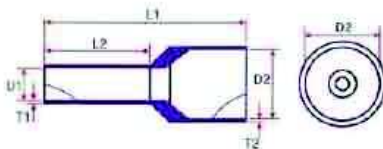
WIRE NUT CONNECTION



WIRE COMBINATION

MIN 2X0.5mm ²
MAX 2X1.5mm ²
MIN 3X0.5mm ²
MAX 3X1.5mm ²
MIN 3X0.5mm ²
MAX 3X1.5mm ²
MIN 2X1.5mm ²
MAX 4X2.5mm ²
MIN 2X2.5mm ²
MAX 3X6mm ²
MIN 3X4mm ²
MAX 4X6mm ²

CORE-END SLEEVE (FERRULES)



COND(mm)	D1 X D2	L1 X L2	T1 X T2	COLOR
0.5	1X2.6	14X8	0.15X0.3	WHITE
0.75	1.2X2.8	14X8	0.15X0.3	BLUE
1	1.4X3	14X8	0.15X0.3	YELLOW
1.5	1.7X3.5	16X8	0.15X0.3	BLACK
2.5	2.2X4.2	16X8	0.2X0.3	GRAY
4	2.8X4.8	19X10	0.2X0.35	ORANGE
6	3.5X6.3	20X12	0.2X0.35	GREEN
10	4.5X7.6	22X12	0.2X0.4	BROWN
16	5.8X8.8	24X12	0.2X0.4	IVORY
25	7.3X11.2	28X16	0.2X0.4	BLACK
35	8.3X12.7	30X16	0.2X0.4	RED
50	10.3X15	36X20	0.3X0.5	BLUE

MATERIAL	E-COPPER TINNED
WITH INSULATION	POLY-AMIDE 66

Cable Tie Colour

Ty-Rap® Nylon 6.6 Cable Ties



STD. PKG. CAT. NO.	BULK PKG. CAT. NO.	BODY WIDTH IN./MM.	LENGTH IN./MM.	MAX. WIRE BUNDLE DIA. IN./MM.	MILITARY STANDARD PART NO.	TENSILE STRENGTH LBS./N.	STD. PKG. QTY.	BULK PKG. QTY.
TY523M	TY23M	.09/2.29	3.82/91.95	.63/16.00	MS3367-4	18/80.07	100	1,000
TY52315M	TYB2315M	.09/2.29	7.00/177.80	1.50/38.10	—	18/80.07	100	1,000
TY5232M	TY232M	.09/2.29	8.00/203.20	2.00/50.80	—	18/80.07	100	1,000
TY5234M	TY234M	.09/2.29	14.00/355.60	4.00/101.60	—	18/80.07	100	1,000
TY524M	TY24M	.14/3.56	5.50/139.70	1.13/28.70	MS3367-5	40/177.90	100	1,000
TY5242M	TY242M	.14/3.56	8.19/208.03	2.00/50.80	—	40/177.90	100	1,000
TY526M	TY26M	.14/3.56	11.10/281.94	3.00/76.20	—	30/133.40	100	1,000
TY5244M	TY244M	.14/3.56	14.50/368.30	4.00/101.60	—	30/133.40	100	1,000
TY525M	TY25M	.19/4.83	7.31/185.67	1.75/44.45	MS3367-1	50/222.40	100	1,000
TY5253M	TY253M	.19/4.83	11.80/294.64	3.00/76.20	MS3367-7	50/222.40	100	1,000
TY528M	TY28M	.19/4.83	14.20/360.68	4.00/101.60	MS3367-2	50/222.40	100	1,000
TY5272M†	TY272M†	.27/6.86	8.75/222.250	2.00/50.80	—	120/533.80	50	500
TY527M†	TY27M†	.27/6.86	13.40/340.36	3.50/88.90	MS3367-3	120/533.80	50	500
TY5275M	TY275M	.27/6.86	18.00/457.20	5.00/127.00	—	120/533.80	50	500
TY5277M	TY277M	.27/6.86	24.30/617.22	7.00/177.80	—	120/533.80	50	500
TY529M	TY29M	.27/6.86	30.00/762.00	9.00/228.60	MS3367-6	120/533.80	50	500
TY53510M†	—	.32/8.13	35.00/889.00	10.00/254.00	—	175/778.40	50	—
TY54513M†	—	.32/8.13	45.00/1143.00	13.00/330.20	—	175/778.40	50	—

Cable ties made from natural nylon 6.6 are excellent performers in most applications.

For use in temperatures ranging from -40° F to 185° F (-40° C to 85° C).

† Recognized Models

- UL Listed Natural 6.6 Nylon Cable Ties are suitable for use in air handling spaces (plenums) in accordance with Section 300.22 (C) & (D) of the National Electrical Code.
- UL File No. E49405
- Natural nylon color

The colors you need in convenient packs!

Ty-Rap® UV-Resistant Nylon 6.6 Cable Ties — Color Assortment



- Construction — UV-Stabilized nylon 6.6, 316 stainless steel locking device



STD. PKG. CAT. NO.	BULK PKG. CAT. NO.	DESCRIPTION	LENGTH IN./MM.	TENSILE STRENGTH LBS./N.	STD. BULK QTY.
—	TY525M-CLRS	Multi-Colored, UV-Stabilized Nylon, (10 each of standard ten colors)*	7.31/185.67	50/222.40	100 Ties
—	TY25M-X	Black, UV-Stabilized Nylon	7.31/185.67	50/222.40	1,000 Ties
—	TY25M-1	Brown, UV-Stabilized Nylon	7.31/185.67	50/222.40	1,000 Ties
—	TY25M-2	Red, UV-Stabilized Nylon	7.31/185.67	50/222.40	1,000 Ties
—	TY25M-3	Orange, UV-Stabilized Nylon	7.31/185.67	50/222.40	1,000 Ties
—	TY25M-4	Yellow, UV-Stabilized Nylon	7.31/185.67	50/222.40	1,000 Ties
—	TY25M-5	Green, UV-Stabilized Nylon	7.31/185.67	50/222.40	1,000 Ties
—	TY25M-6	Blue, UV-Stabilized Nylon	7.31/185.67	50/222.40	1,000 Ties
—	TY25M-7	Purple, UV-Stabilized Nylon	7.31/185.67	50/222.40	1,000 Ties
—	TY25M-8	Gray, UV-Stabilized Nylon	7.31/185.67	50/222.40	1,000 Ties
—	TY25M-9	White, UV-Stabilized Nylon	7.31/185.67	50/222.40	1,000 Ties
—	TY25M-22	Beige, UV-Stabilized Nylon	7.31/185.67	50/222.40	1,000 Ties

For use in temperatures ranging from -40° F to 185° F (-40° C to 85° C).

Suitable for use in air handling spaces in accordance with Section 300.22 (C) & (D) of the National Electrical Code.

* 100 standard ties in black, brown, red, orange, yellow, green, blue, purple, gray, and white (10 each)

Recommended tooling — ERG-50, WT1-TB

Note: The base catalog number for Ty-Rap® cable ties is for natural (non-colored) nylon without the UV-stabilizing additive, which is not suitable for outdoor use. For colored UV-stabilized nylon Ty-Rap® cable ties, add the following suffix numbers to the base catalog numbers. For example, TY25M is natural (non-colored) nylon for indoor use only, while TY25M-2 is red UV-stabilized nylon for indoor or outdoor use. (Consult customer service for ordering information.)

COLOR	SUFFIX NO.	COLOR	SUFFIX NO.	COLOR	SUFFIX NO.	COLOR	SUFFIX NO.
Black	X	Orange	3	Blue	6	White	9
Brown	1	Yellow	4	Purple	7	Beige	22
Red	2	Green	5	Gray	8		

Cable Tie Nylon & Stainless Steel



WHITE NYLON CABLE TIE



BLACK NYLON CABLE TIE
(UV RESISTANT)

SIZE			
100x3.5mm	150x3.6mm	200x3.6mm	200x4.8mm
200x7.9mm	250x4.8mm	300x4.8mm	300x7.9mm
300x4.8mm	400x7.9mm	450x9mm	500x9mm
600x9mm	650x12mm	700x9mm	800x9mm
900x9mm			

STAINLESS STEEL CABLE TIES



MATERIAL : FIRE RESISTANT STAINLESS STEEL
GRADE 316 WITH PVC INSULATION
TEMPERATURE : -80°C TO +500°C

MODEL	SIZE(mm)
S316-150P	150x4.6
S316-200P	200x4.6
S316-250P	250x4.6
S316-300P	300x4.6
S316-360P	360x4.6
S316-500P	500x4.6
S316-200HP	200x7.9
S316-250HP	250x7.9
S316-300HP	300x7.9
S316-400HP	400x7.9
S316-500HP	500x7.9
S316-600HP	600x7.9
S316-300HP12	300x12
S316-450HP12	450x12
S316-600HP12	600x12
S316-1000HP12	1000x12



MATERIAL : FIRE RESISTANT STAINLESS STEEL
GRADE 316 WITHOUT PVC
TEMPERATURE : -80°C TO +500°C

MODEL	SIZE(mm)
S316-100	100x4.6
S316-150	150x4.6
S316-200	200x4.6
S316-250	250x4.6
S316-300	300x4.6
S316-360	360x4.6
S316-500	500x4.6
S316-200H	200x7.9
S316-250H	250x7.9
S316-300H	300x7.9
S316-360H	360x7.9
S316-500H	500x7.9
S316-300H12	300x12
S316-450H12	450x12
S316-600H12	600x12
S316-1000H12	1000x12

Stainless Steel Band & Buckle



Material : Fire Resistant Stainless Steel SUS316
with Insulation
Application : Fastening cables to cables ladders and trays

WIDTH(mm)	THICKNESS(mm)	LENGTH/ROLL(M)	WEIGHT/ROLL(g)
12.7	1.1	20	1075
16	1.2	20	1206

BAND STRAP WITHOUT INSULATION



Material : Fire Resistant Stainless Steel SUS316
without Insulation and Galvanized
Application : Fastening cables to cables ladders and trays

TYPE	WIDTH(mm)	THICKNESS(mm)	LENGTH/ROLL(M)	WEIGHT/ROLL(g)
SUS316	12.7	1.3	30	1287
SUS316	16	1.4	30	1353
GALVANIZED	14	1.3	30	1075

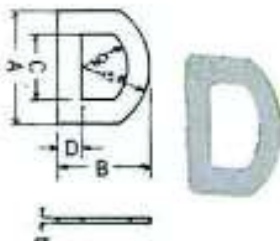
BAND BUCKLE



Material : Fire Resistant Stainless Steel SUS316
and Galvanized Steel
Application : Fastening cables to cables ladders and trays

TYPE	WIDTH (mm)	DIMENSION LxM(mm)	THICKNESS (mm)	WEIGHT/PACK X100Pcs(g)
SUS316	12.7	16.5X22.2	0.85	454
SUS316	16	19X22.6	0.85	520
GALVANIZED	12.7	16.5X22.2	0.85	550

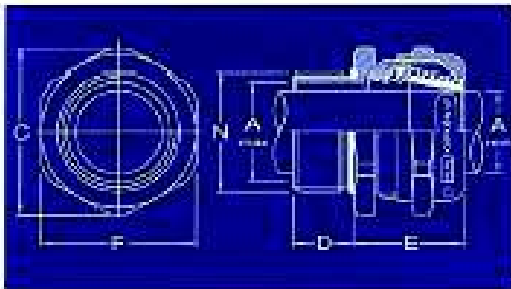
D BAND BUCKLE



Material : Fire Resistant Stainless Steel SUS316
and Galvanized Steel
Application : Fastening cables to cables ladders and trays

TYPE	A(mm)	B(mm)	C(mm)
SUS316	25	20	15
GALVANIZED	25	20	15

Brass Nickel Plated Cable Gland IP68



STANDARD :
EN 50262:1999

APPLICATION :
Cable gland with PCP sealing, Nitrile 'O' ring at the connecting thread and polyamide traction relief clamping insert

FUNCTION:
Produces seal on outer sheath of the cable

INGRESS PROTECTION :
IP68 (3 bar) EN 60529

MATERIAL :
Brass BS 2874 CZ121 Pb3

OPTIONS :
Thread - PG, NPT, BSP & BSPT
Plating - Chrome (CP), Zinc (ZP), Tin (TP)
Material - Aluminium Alloy and Stainless Steel 316
Seals - PCP (Black), Silicone (Orange)

OPERATING TEMP. :
Standard Seals -20°C to + 100°C
Extended Seals -60°C to + 160°C

CABLE TYPE :
Unarmoured

SIZE REF.	ENTRY THREAD		CABLE ACCEPTANCE DETAILS		HEXAGONAL DETAILS		ASSEMBLED LENGTH 'E'
	THREAD 'N'	LENGTH 'D'	'A' MIN	'A' MAX	A/F 'F'	A/C 'C'	
KK-W12	M12X1.5	13.0	4.5	8.0	18.0	20.0	19.0
KK-W16	M16X1.5	13.0	6.5	10.0	22.0	24.4	21.0
KK-W20	M20X1.5	13.0	8.0	15.0	27.0	30.0	25.0
KK-W25	M25X1.5	13.0	11.0	20.0	34.0	37.7	27.0
KK-W32	M32X1.5	13.0	17.0	26.0	43.0	47.7	31.0
KK-W40	M40X1.5	13.0	21.0	32.0	55.0	61.0	36.0
KK-W50	M50X1.5	14.0	28.0	43.0	68.0	75.5	40.0
KK-W63	M63X1.5	20.0	38.0	54.0	80.0	88.8	44.0

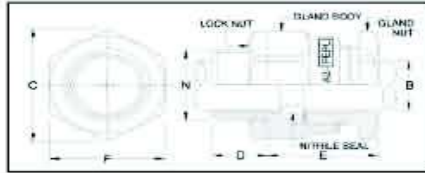
A2 & E1W Brass Nickel Plated Cable Gland



GLAND REF : A-101

APPLICATION :
Outdoor or indoor for use with all type of Unarmoured Cables

FUNCTIONS :
Produces Seal on Outer Sheath of the Cable



A2-PEPL(BS6121) GLAND REF : A-101

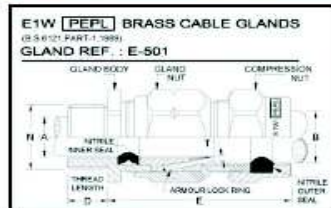
GLAND SIZE REF.	ENTRY THREAD		CABLE ACCEPTANCE DETAILS		HEXAGONE SIZE		ASSEMBD. LENGTH APPROX. 'E'
	DIA 'N'	DIM 'D'	DIM 'B' MIN	DIM 'B' MAX	A/F 'F'	A/C 'C'	
A2-20S	20	15	8.0	11.5	22.0	24.4	22.0
A2-20L	20	15	10.5	13.8	24.0	26.6	22.0
A2-25S	25	15	13.0	16.0	30.0	33.3	24.0
A2-25L	25	15	16.0	19.5	30.0	33.3	24.0
A2-32S	32	15	18.5	23.0	41.0	45.5	30.0
A2-32L	32	15	22.5	26.5	41.0	45.5	30.0
A2-40S	40	20	25.0	29.0	46.0	51.0	33.0
A2-40L	40	20	28.0	32.0	46.0	51.0	33.0
A2-50S	50	20	30.5	37.5	60.0	66.6	37.0
A2-50L	50	20	37.0	44.0	65.0	72.1	37.0
A2-63S	63	20	42.5	49.5	75.0	83.3	39.0
A2-63L	63	20	48.5	55.5	80.0	88.8	39.0
A2-75S	75	20	54.5	61.5	84.0	93.2	42.0
A2-75L	75	20	60.0	66.5	90.0	100.0	42.0
A2-90L	90	25	66.0	79.0	106.0	117.6	45.0
A2-100L	100	25	79.0	89.0	115.0	127.6	47.0
A2-110L	110	25	89.0	98.0	125.0	138.8	48.0

ALL DIMENSIONS ARE IN MM ONLY



GLAND REF : E - 501

- STANDARD :**
B.S. 6121, PART-I
- APPLICATION :**
INDOOR OR OUTDOOR FOR USE WITH ALL TYPE OF SWA EXTRUDED BENDING CABLES.
- FUNCTIONS :**
 - * PROVIDES FOR ARMOUR CLAMP
 - * PROVIDES SEAL INNER & OUTER SHEATH OF CABLE.
- OPTIONS :**
ALL TYPE OF ACCESSORIES AVAILABLE.



GLAND SIZE REF.	ENTRY THREAD		CABLE ACCEPTANCE DETAILS		
	DIA. 'N'	LENGTH 'D'	DIA. 'A' MIN - MAX	DIA. 'B' MIN - MAX	ARMOUR WIRE DIA. 'T'
E1W - 20S	20	15	8.0 - 11.8	12.9 - 15.8	0.90/1.25
E1W - 20L	20	15	11.0 - 13.8	15.5 - 20.8	0.90/1.25
E1W - 25S	25	15	11.5 - 16.5	16.0 - 23.5	1.25/1.60
E1W - 25L	25	15	13.0 - 19.8	20.3 - 27.5	1.25/1.60
E1W - 32S	32	15	15.0 - 23.5	23.0 - 30.0	1.60/2.00
E1W - 32L	32	15	19.0 - 26.4	26.7 - 33.5	1.60/2.00
E1W - 40S	40	20	22.5 - 29.0	29.0 - 38.0	1.60/2.00
E1W - 40L	40	20	25.0 - 32.4	33.0 - 40.9	1.60/2.00
E1W - 50S	50	20	31.5 - 38.0	39.4 - 46.3	2.00/2.50
E1W - 50L	50	20	36.5 - 44.0	45.7 - 52.6	2.00/2.50
E1W - 63S	63	20	42.5 - 49.0	52.1 - 61.5	2.50
E1W - 63L	63	20	48.5 - 55.5	58.4 - 65.3	2.50

All Dimensions are in MM.

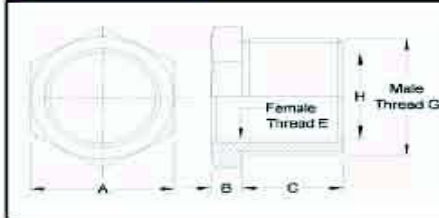
*Not included in B.S. 6121, part-1

Brass Nickel Plated Reducer & Enlarger



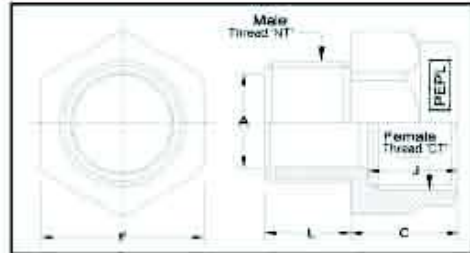
APPLICATION :
Reducers effectively reduce the entry thread diameter of enclosures to accept the smaller thread diameter (and often different thread form) of a gland whose dimensions are determined by cable size.

Material : Brass
Finish : Bright Nickel Plated



Size M X F	'A' A/F	'G' Male Thread	'E' Female Thread	'B' Thickness	'C' Length
M16 X M12	18.0	16 X1.5	12 X1.5	3.2	15.0
M20 X M16	22.0	20 X1.5	16 X1.5	3.5	17.0
M25 X M20	27.0	25 X1.5	20 X1.5	4.0	17.0
M32 X M25	34.0	32 X1.5	25 X1.5	5.0	18.0
M40 X M32	45.0	40 X1.5	32 X1.5	5.5	20.0
M50 X M40	55.0	50 X1.5	40 X1.5	6.0	20.0
M63 X M50	68.0	63 X1.5	50 X1.5	7.0	22.0
M75 X M63	80.0	75 X1.5	63 X1.5	8.0	25.0

ABOVE ALL DIMENSIONS ARE IN MILLIMETERS ONLY



BRASS NICKEL PLATED ADAPTORS OR ENLARGERS

Adaptor allows a metric (ISO) threaded gland to be terminated in enclosures with different entry thread form (ET, NPT, PG, & BSP). Generally the adaptor is male threaded to B.S.31 (ET) at one end and female threaded (ISO) at the other end to accept a metric cable gland.

Material : Brass
Finish : BRIGHT NICKEL PLATING

SIZE REF M X F	HEX.A/F 'F'	Bore Dia. 'A'	Male Thread 'NT' 6g	Length 'L'	Female Thread 'CT' 6g	Depth 'J'	Length 'C'
M12 X M16	19.0	8.0	12 X1.5	11.0	16 X1.5	16.0	19.0
M16 X M20	24.0	11.5	16 X1.5	11.0	20 X1.5	16.0	19.0
M20 X M25	30.0	15.0	20 X1.5	13.0	25 X1.5	21.0	25.0
M25 X M32	37.0	20.0	25 X1.5	13.0	32 X1.5	23.0	28.0
M32 X M40	46.0	26.8	32 X1.5	13.0	40 X1.5	25.0	30.0
M40 X M50	55.0	32.5	40 X1.5	17.0	50 X1.5	28.0	33.0
M50 X M63	70.0	44.5	50 X1.5	17.0	63 X1.5	30.0	36.0
M63 X M75	82.0	56.0	63 X1.5	17.0	75 X1.5	30.0	36.0

Marker & Marker Strap



SUS 316 MARKER

MATERIAL : FIRE RESISTANT STAINLESS STEEL SUS 316
 PACKING : 100/PKT
 MARKER LENGTH : 8 mm

MARKER TAG

0	1	2	3	4	5	6	7	8	9
A	B	C	D	E	F	G	H	I	J
K	L	M	N	O	P	Q	R	S	T
U	V	W	X	Y	Z	-	/	BLANK	



SUS 316 MARKER STRAP

MATERIAL : FIRE RESISTANT STAINLESS STEEL SUS 316

NO. OF TAGS	LENGTH	WIDTH
8	95mm	7mm
13	130mm	7mm
20	195mm	7mm

PVC MARKER AND MARKER STRAP



PVC CABLE MARKER

MATERIAL : PVC INSULATION
 PACKING : 500/BOX
 MARKER LENGTH : 5 mm

MARKER TAG

0	1	2	3	4	5	6	7	8	9
A	B	C	D	E	F	G	H	I	J
K	L	M	N	O	P	Q	R	S	T
U	V	W	X	Y	Z	-	/	BLANK	



PVC CABLE MARKER STRAP

MATERIAL : PVC INSULATION

NO. OF TAGS	LENGTH	WIDTH
10	65mm	9mm
16	100mm	9mm

PLAIN CUT SHAPE MARKER



EC-0 MARKER WITH RANGE 2.0-3.2 cm
 EC-1 MARKER WITH RANGE 3.0-4.2 cm
 EC-2 MARKER WITH RANGE 3.6-7.4 cm
 EC-3 MARKER WITH RANGE 5.2-10.0 cm

MATERIAL : SOFT GRADE, PVC COATING
 PACKING : 100/BOX

MARKER TAG

0	1	2	3	4	5	6	7	8	9
A	B	C	D	E	F	G	H	I	J
K	L	M	N	O	P	Q	R	S	T
U	V	W	X	Y	Z	-	/	BLANK	



TY-1

Temporary or permanent marking for identification of cable after termination.
 Cloth made with glue on the back for easy using.
 Specify required number marked 0-9.

TY-2

Temporary or permanent marking for identification of cable after termination.
 Cloth made with glue on the back for easy using.
 Specify required alphabet marked A-Z.

Marker System for Terminal Block



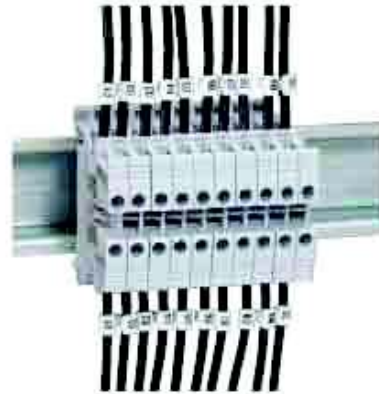
0395 20



0395 98



0395 05 on Wiring 3 terminal blocks



Same markers for cable and terminal blocks

Pack	Cat. Nos.	Blank markers
		Displayed by sheet of 100 pre-cut markers Manual marking or via Logicab 2
1 000	0395 00	For blocks 5 mm width
1 000	0395 01	For blocks 6 mm width
1 000	0395 02	For blocks 8 mm width

Numbers		
Horizontal format		
Width of 5 mm		
1 000	0395 05	From 1 to 10 (10 times)
1 000	0395 06	From 11 to 20 (10 times)
1 000	0395 09	From 1 to 50 (2 times)
1 000	0395 10	From 1 to 100
Width of 6 mm		
1 000	0395 15	From 1 to 10 (10 times)
1 000	0395 16	From 11 to 20 (10 times)
1 000	0395 19	From 1 to 50 (2 times)
1 000	0395 20	From 1 to 100
1 000	0395 21	From 101 to 200

Black felt tip pen		
10	0395 98	Permanent marker

Pack	Cat. Nos.	Markers for cables 1.5 to 2.5 mm ² cross-section and terminal blocks
		Numbers : black on white background (available in black on yellow background on request)
240	0381 60	01 to 20
240	0381 61	21 to 40
240	0381 62	41 to 60
240	0381 63	61 to 80



Perfect alignment of markers

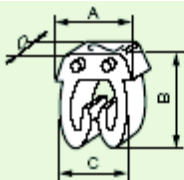


0382 12








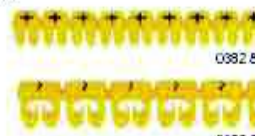
Terminal block with CAB 3 markers and label holders

Marker For Terminal & Cable



Dimensions	Cable cross-section (mm ²)			
	0-15 to 0-5	0-5 to 1-5	1-5 to 2-5	4 to 6
A (mm)	5	5	5-6	8
B (mm)	5-05	6-4	7-6	9-6
C (mm)	3-7	4-3	4-9	7-1
D (mm)	2-3	3	3	3
Ø min./max. (mm)	0-8/2-2	2-2/3	2-8/3-8	4-3/5-3

Pack ¹⁾	Cat. Nos.	Markers for cables 0-15 to 0-5 mm ² and 0-5 to 1-5 mm ² cross-section and terminal blocks
		On Viking 3 terminal blocks - 4 markers 0-15 to 0-5 mm ² max. - 3 markers 0-15 to 1-5 mm ² max.
		Digits : international colour code
		0 Black 1 Brown 2 Red 3 Orange 4 Yellow 5 Green 6 Blue 7 Purple 8 Grey 9 White
		
		Letters : black on yellow background
		A B C D E F G H I J K L M N O P Q R S T U V W X Y Z
		
		Conventional symbols : black on yellow background
		/ • + - ~ = ↓
		

Pack ¹⁾	Cat. Nos.	Markers for cables 1-5 to 2-5 mm ² and 4 to 6 mm ² cross-section
		Digits : international colour code
		0 Black 1 Brown 2 Red 3 Orange 4 Yellow 5 Green 6 Blue 7 Purple 8 Grey 9 White
		
		Letters : black on yellow background
		A B C D E F G H I J K L M N O P Q R S T U V W X Y Z
		
		Conventional symbols : black on yellow background
		/ • + - ~ = ↓
		

Terminal Block



Used to make the electrical connection between 2 rigid or flexible copper cables
 2 areas for bridging combs for alternating equipotential connection up to 8 width
 For rails L depth 15 mm, L EN 60715 depth 7.5 mm and 15 mm

Pack	Cat. Nos.	Connecting	Ex			
		Grey for standard circuit, blue for neutral conductor, orange for circuit not broken by the master isolating device, red for special circuits (safety, protected, etc)				
		1 connection - 1 entry/1 exit				
			Nominal cross-section (mm ²)	Capacity Rigid cable (mm ²)	Flexible cable (mm ²)	Width (mm)
60	0371 60	Grey	2.5	0.25 to 4	0.25 to 2.5	5
60	0371 00	Blue				
60	0371 20	Orange				
60	0371 30	Red				
50	0371 61	Grey				
50	0371 01	Blue	4	0.25 to 6	0.25 to 4	6
50	0371 21	Orange				
50	0371 31	Red				
40	0371 62	Grey	6	0.5 to 10	0.25 to 6	8
40	0371 02	Blue				
30	0371 63	Grey	10	1.5 to 16	2.5 to 10	10
30	0371 03	Blue				
20	0371 64	Grey	16	1.5 to 25	4 to 16	12
20	0371 04	Blue				
20	0371 65	Grey	35	2.5 to 50	4 to 35	15
20	0371 05	Blue				
10	0371 66 ⁽¹⁾	Grey	70	25 to 95	16 to 70	22
25	0371 69	Grey	4	0.25 to 6	0.25 to 4	6
25	0371 09	Blue				
60	0371 67	Grey	2.5	0.25 to 4	0.25 to 2.5	5
60	0371 07	Blue				
60	0371 68	Grey	4	0.25 to 6	0.25 to 4	6
60	0371 08	Blue				
50	0371 51 ⁽²⁾	Grey	2.5	0.25 to 4	0.25 to 2.5	5

Pack	Cat. Nos.	For protection conductor	Ex			
		1 connection - 1 entry/1 exit - metal base				
		Screwless fixing on rail up to 10 mm width PEN from 10 mm ²				
			Nominal cross-section (mm ²)	Capacity		Width (mm)
		Colour		Rigid cable (mm ²)	Flexible cable (mm ²)	
60	0371 70	Green/yellow	2.5	0.25 to 4	0.25 to 2.5	5
50	0371 71	Green/yellow	4	0.25 to 6	0.25 to 4	6
40	0371 72	Green/yellow	6	0.5 to 10	0.25 to 6	8
30	0371 73	Green/yellow	10	1.5 to 16	2.5 to 10	10
10	0371 74	Green/yellow	16	1.5 to 25	4 to 16	12
10	0371 75	Green/yellow	35	2.5 to 50	4 to 35	15
10	0371 76	-	35	2.5 to 50	4 to 35	15
		1 connection - 2 entries/2 exits - metal base				
		Screwless fixing on rail				
50	0371 79	Green/yellow	4	0.25 to 6	0.25 to 4	6
		1 connection - 1 entry/1 exit - plastic base				
		Can be used for protection conductor inside class II equivalent assemblies				
50	0371 77	Green	4	0.25 to 6	0.25 to 4	6
40	0371 78	Green	6	0.5 to 10	0.25 to 6	8
		PNE - Phase/Neutral/Earth				
		3 connections on 3 levels - metal base				
		Green/yellow marking for the lower level Screwless fixing on rail				
50	0371 52 ⁽³⁾	Colour	Nominal cross-section (mm ²)	Capacity		Width (mm)
		Grey	2.5	Rigid cable (mm ²)	Flexible cable (mm ²)	
				0.25 to 4	0.25 to 2.5	5

TC Terminal Block



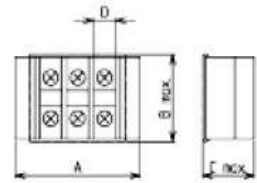
TC 10 S06



T 10 05



T 20C 06



No. of pins	Type name	600V, 1.25 mm ² [15A], M3 x 8 ±, screw type			600V, 1.25 mm ² [15A], M3 x 8 ±, raised type			250V, 2 mm ² [20A], M3.5 x 8 ±, screw type			250V, 3.5 mm ² [30A], M4 x 10 ±, screw type		
		External dimensions (mm)			External dimensions (mm)			External dimensions (mm)			External dimensions (mm)		
		A	B	C D	A	B	C D	A	B	C D	A	B	C D
2	TC 10 S 02	40	B=31,	TC 10 SU 02	40	B=31,	T 10 02	42	B=30,	T 20 C 02	47	B=34,	
3	TC 10 S 03	48	C=30.5,	TC 10 SU 03	48	C=30.5,	T 10 03	52	C=21,	T 20 C 03	59	C=22,	
4	TC 10 S 04	56	D=6.7	TC 10 SU 04	56	D=6.7	T 10 04	62	D=8	T 20 C 04	71	D=9.5	
5	TC 10 S 05	64		TC 10 SU 05	64		T 10 05	72		—	—		
6	TC 10 S 06	72		TC 10 SU 06	72		T 10 06	82		T 20 C 06	95		
8	TC 10 S 08	88		TC 10 SU 08	88		T 10 08	102		T 20 C 08	119		
10	TC 10 S 10	104		TC 10 SU 10	104		T 10 10	122		T 20 C 10	143		
12	TC 10 S 12	120		TC 10 SU 12	120		T 10 12	142		T 20 C 12	167		
14	TC 10 S 14	136		TC 10 SU 14	136		T 10 14	162		T 20 C 14	191		
15	TC 10 S 15	144		TC 10 SU 15	144		T 10 15	172		T 20 C 15	203		
16	TC 10 S 16	152		TC 10 SU 16	152		T 10 16	182		T 20 C 16	215		
18	TC 10 S 18	168		TC 10 SU 18	168		T 10 18	202		T 20 C 18	239		
20	TC 10 S 20	184		TC 10 SU 20	184		T 10 20	222		T 20 C 20	263		
22	TC 10 S 22	200		TC 10 SU 22	200		T 10 22	242		T 20 C 22	287		
24	TC 10 S 24	216		TC 10 SU 24	216		T 10 24	262		T 20 C 24	311		
25	TC 10 S 25	224		TC 10 SU 25	224		T 10 25	272		T 20 C 25	323		
30	TC 10 S 30	264		TC 10 SU 30	264		T 10 30	322		T 20 C 30	383		



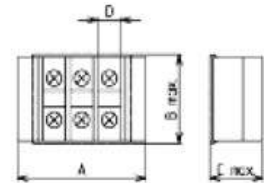
T 30C 04



TC 60C 04



TC 100C 04



No. of pins	Type name	600V, 8 mm ² [50A], M5 x 12 ±, screw type			600V, 14 mm ² [70A], M5 x 10 ±, with round washer			600V, 38 mm ² [130A], M8 x 14+, hexagonal bolt			600V, 100 mm ² [240A], M10 x 20+, hexagonal bolt		
		External dimensions (mm)			External dimensions (mm)			External dimensions (mm)			External dimensions (mm)		
		A	B	C D	A	B	C D	A	B	C D	A	B	C D
2	T 30 C 02	60	B=45,	TC 60 C 02	64	B=53,	TC 100 C 02	78	B=71,	TC 200 C 02	96	B=83.5,	
3	T 30 C 03	76	C=29,	TC 60 C 03	82	C=35,	TC 100 C 03	105	C=45.5,	TC 200 C 03	130	C=56.2,	
4	T 30 C 04	92	D=12.7	TC 60 C 04	100	D=14.5	TC 100 C 04	132	D=23	TC 200 C 04	164	D=29.2	
5	—	—		TC 60 C 05	118		—	—		—	—		
6	T 30 C 06	124		TC 60 C 06	136		TC 100 C 06	186		TC 200 C 06	232		
8	T 30 C 08	156		TC 60 C 08	172		TC 100 C 08	240		—	—		
9	—	—		TC 60 C 09	190		TC 100 C 09	267		TC 200 C 09	334		
10	T 30 C 10	188		TC 60 C 10	208		TC 100 C 10	294		TC 200 C 10	368		
12	T 30 C 12	220		—	—		—	—		—	—		
15	T 30 C 15	268		—	—		—	—		—	—		
18	T 30 C 18	316		—	—		—	—		—	—		
20	T 30 C 20	348		—	—		—	—		—	—		

BA Terminal Block



Key features of the BA series include:

- Self-contained: end plates are not required
- Rugged heavy-duty construction
- Current capacities up to 40A
- 3-pole units available as 1 piece (no endplates are needed)
- Fuse blocks with blown fuse indicators



UL Recognized
File No. E78117

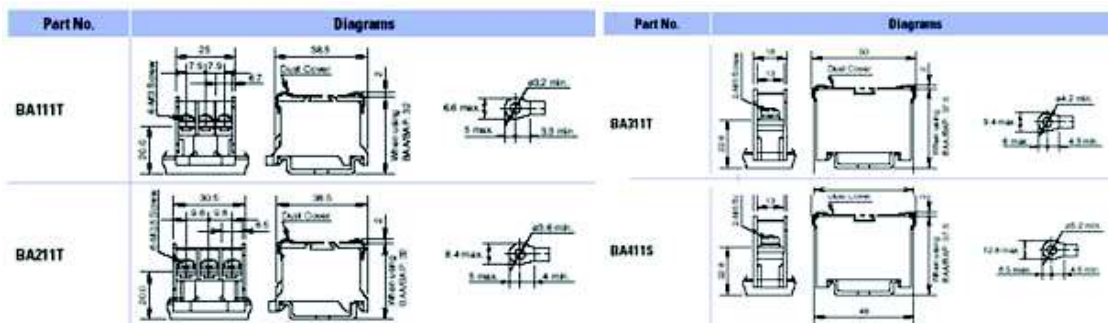


CSA Certified
File No. LR64803

Specifications

Power Blocks

Part Numbers		BA111T	BA211T	BA311T	BA411S
Appearance					
Width		0.984" (25mm)	1.201" (30.5mm)	1.358" (34.5mm)	0.630" (16mm)
Approvals		UL, CSA	UL, CSA	UL, CSA	UL, CSA
No. of Poles		3	3	3	1
Wire Sizes		22 to 14 AWG	22 to 12 AWG	18 to 10 AWG	16 to 6 AWG
Voltage/ Current	UL/CSA	300V / 15A	300V / 20A	150V / 30A	600V / 40A
	JIS	600V / 16A	600V / 21A	600V / 40A	600V / 70A
Terminals	Size	M3	M3.5	M4	M5
	Type	Standard screw	Standard screw	Standard screw	Standard screw
Mounting		35mm DIN rail	35mm DIN rail	35mm DIN rail	35mm DIN rail
Terminal Torque	(N-m)	0.6 - 1.0	1.0 - 1.3	1.4 - 2.0	2.6 - 3.7
	(in.-lbs.)	5.3 - 8.9	8.9 - 11.5	12.4 - 17.8	23.1 - 32.8
DIN Rail Stop		BNL-5	BNL-5	BNL-5	BNL-5
Dust Cover		BNC220	BNC220	BNC230	BNC320
Marking Strip	PVC	BNM7	BNM7	BNM7	BNM7
	Fiberglass	BNM9	BNM9	BNM9	BNM9
	End clip	BNM3	BNM3	BNM3	BNM3



Sleeves



PVC Sleeves

Feature Benefits

- Widely used for protection of cable harnesses.
- To be used before wires are connected to any type of terminal.

Inner Diameter (in mm)	Wall Thickness (in mm)	Std Colors	Std Packing
0.50	0.40	Black, Red, Blue, Yellow, Green	100 mtr Coil
1.00	0.40	"	"
1.50	0.40	"	"
2.00	0.40	"	"
2.50	0.40	"	"
3.00	0.40	"	"
3.50	0.40	"	"
4.00	0.40	"	"
5.00	0.40	"	30 mtr Coil
6.00	0.50	"	"
7.00	0.50	"	"
8.00	0.50	"	"
9.00	0.50	"	"

Inner Diameter (in mm)	Wall Thickness (in mm)	Std Colors	Std Packing
10.00	0.50	Black, Red, Blue, Yellow, Green	30 mtr Coil
12.00	0.55	"	"
14.00	0.75	"	"
15.00	0.75	"	"
16.00	0.75	"	"
18.00	0.75	"	"
20.00	0.75	"	"
22.00	0.75	"	"
25.00	0.75	"	"
30.00	1.00	Black	"
32.00	1.00	"	"
35.00	1.00	"	"
40.00	1.00	"	"
50.00	1.25	"	"



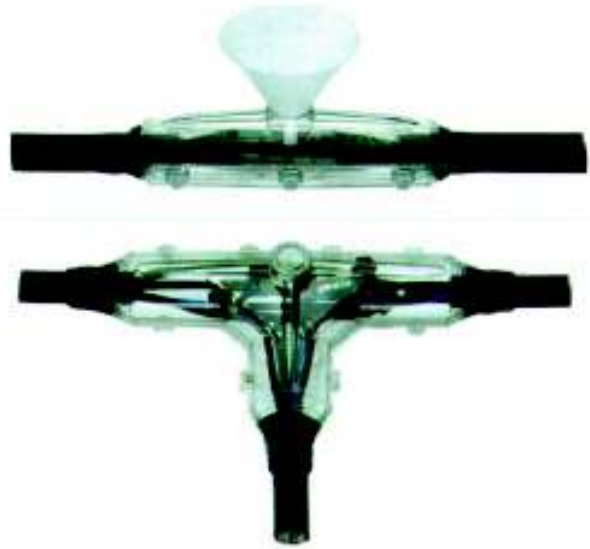
Fibreglass Sleeves

Properties	Break Voltage 250 mm electrode, Room Temp	
	Median value	Minimum value
High breakdown voltage, apply to insulating structure of the 135°C and below	27.0KV	25.0 KV

Nominal Diameter	Tolerance of Inside Diameter		Wall thickness	
	Two-way (±)	One-way (+)	Min.	Max.
0.3	0.05	0.10	0.20	0.30
0.5	0.10	0.20	0.25	0.50
0.8	0.10	0.20	0.25	0.50
1.0	0.15	0.30	0.25	0.90
1.5	0.15	0.30	0.35	0.90
2.0	0.20	0.40	0.35	0.90
2.5	0.20	0.40	0.40	0.90
3.0	0.25	0.50	0.40	0.90
3.5	0.25	0.50	0.50	0.90
4.0	0.25	0.50	0.50	0.90
5.0	0.25	0.50	0.50	0.90
6.0	0.25	0.50	0.50	0.90
7.0	0.50	1.0	0.50	1.20
8.0	0.50	1.0	0.50	1.20
9.0	0.50	1.0	0.65	1.20
10.0	0.50	1.0	0.65	1.20
12.0	0.50	1.0	0.65	1.20
14.0	0.50	1.0	0.65	1.20
16.0	0.50	1.0	0.65	1.20
18.0	0.50	1.0	0.65	1.20
20.0	0.50	1.0	0.65	1.20
23.0	0.50	1.0	0.65	1.20
25.0	0.50	1.0	0.65	1.20
27.0	0.50	1.0	0.65	1.20

Cast Resin Straight Joint with Moulded Casing

GT RCGA range of cast resin products is highly suitable for applications in straight joints, branch joints, double branch joints and transition joints. All cast resin accessories are qualified for application with PVC, XLPE and PE-insulated lines and cables. Our products are applicable to deliver joints in outdoor, indoor, under-ground and under-water environments. The primary application advantage of our system is that a single range of cast resin can be used in joints for all voltage from 0.6 KV to 10 KV. It can also be used in joints of telecommunication and signal cables. RCGA is a 2-component-polyurethanic-cast resin system and corresponds to DIN VDE 0291 part 2 specification.



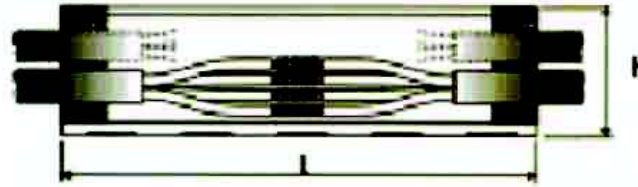
GTRCGA cast resins are halogen-free. The moulded casings are manufactured from high quality robust synthetic materials, which can withstand rough handling. For straight and transition joints our system are equipped with distance holders to provide the necessary safety clearance distance between the connectors. Feeders are found in small sized casing to facilitate easy delivery of resin into the casing.

PRODUCT DIMENSIONS

RCGT - Cast Resin Straight Joint with Moulded Casing		
Straight Joints		
Cable Overall External Dia.	Casing Dimension L X H	Product Part Number
6.0 mm to 19.0 mm	160 mm (L) x 36 mm (H)	RCGT-A-0SJ
6.0 mm to 22.0 mm	190 mm (L) x 48 mm (H)	RCGT-A-1SJ
14.0 mm to 35.0 mm	240 mm (L) x 50 mm (H)	RCGT-A-2SJ
16.0 mm to 37.0 mm	270 mm (L) x 65 mm (H)	RCGT-A-3SJ
20.0 mm to 44.0 mm	360 mm (L) x 80 mm (H)	RCGT-A-4SJ
26.0 mm to 52.0 mm	430 mm (L) x 95 mm (H)	RCGT-A-5SJ
35.0 mm to 65.0 mm	530 mm (L) x 120 mm (H)	RCGT-A-6SJ
45.0 mm to 80.0 mm	700 mm (L) x 180 mm (H)	RCGT-A-7SJ
50.0 mm to 90.0 mm	900 mm (L) x 190 mm (H)	RCGT-A-8SJ

Cast Resin Straight Branching & T-Shape Joints

RCAV - Cast Resin Straight / Branching Joints with Moulded Casing

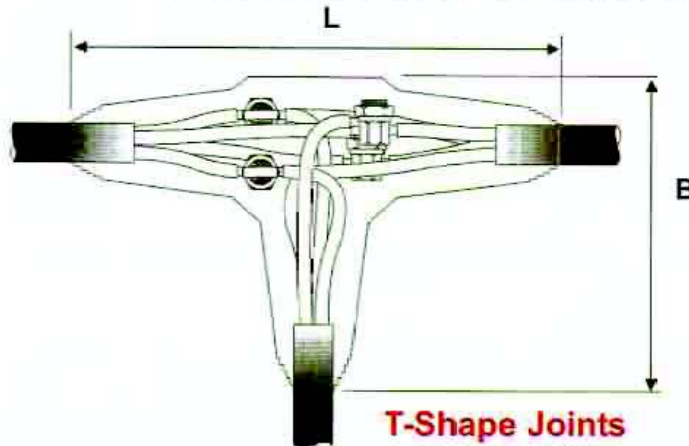


Straight/ Branching Joints

Main Cable Overall Ext. Dia. (approx.)	Branch Cable Overall Ext. Dia. (approx.)	Product Part Number
13.5 mm to 22.8 mm	13.5 mm to 22.8 mm	RCAV-A-2
20.0 mm to 27.0 mm	19.0 mm to 25.0 mm	RCAV-A-3
20.0 mm to 34.5 mm	19.0 mm to 27.0 mm	RCAV-A-4
32.0 mm to 48.5 mm	24.5 mm to 32.5 mm	RCAV-A-5
38.5 mm to 48.5 mm	22.0 mm to 34.5 mm	RCAV-A-6
32.0 mm to 53.0 mm	22.0 mm to 34.5 mm	RCAV-A-7

Other sizes are available upon request. For more information, please contact our sales offices

RCTM - Cast Resin T-shape Joints with Moulded Casing



T-Shape Joints

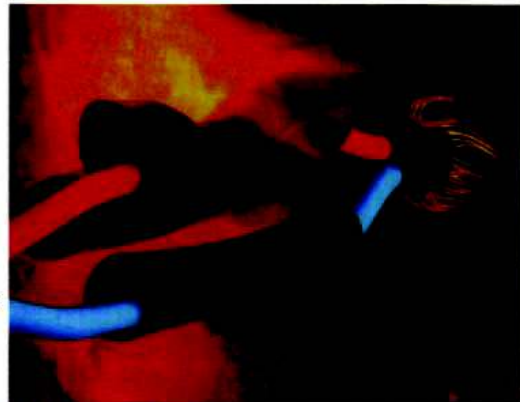
Main Cable Overall Ext. Dia. (approx.)	Casing Dimension L x B x H	Product Part Number
9.0 mm to 22.0 mm	240 mm x 140 mm x 52 mm	RCTM-A-1-E
17.0 mm to 30.0 mm	270 mm x 164 mm x 77 mm	RCTM-A-2-E

The herein given information corresponds to our actual knowledge and is deemed to be correct and reliable. But they do not represent binding properties. Customer and user have to decide autonomously on the application in the provide range. Under no circumstances are liable any eventual, indirect or consequential damages arising from the sales, resale, transfer, use or misuse of the product.

Our liabilities are limited to only in replacing products due to manufacturing defects.

APPLICATIONS:

- Provides waterproof jointing and sealing of cable terminations and joints
- Insulation of overhead and underground power cable connections
- Insulation of communication cable connections
- Waterproofing and environmental sealing of cable glands and connectors
- Corrosion protection, environmental sealing and mechanical protection of pipes and pipes connections



GENERAL PROPERTIES OF PRODUCT:

- High shrink ratio (3.5 : 1)
- High resistant to decay, chemicals, copper corrosion and ultra-violet rays
- Medium wall tubing: lightweight and flexible
- Thick wall tubing when shrunk provides high rigidity and high protection.
- Tubing with hot melt adhesive lining provides excellent waterproofing and environmental sealing capabilities
- **Dielectric Strength:** > 20KV, **Hardness:** Shore D 52, **Operating temp:** -55°C to +135°C

SPECIFICATIONS:

- Products conform and tested to BS, IEC, VDE, DIN and ASTM
- Certified to BS 6910: Part 1: 1988

PRODUCT DIMENSIONS

- **RMW Medium Wall Tubing with/without Hot Melt Adhesive Lining**

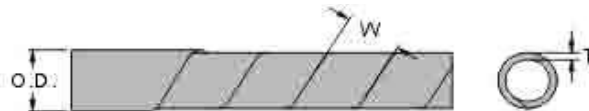
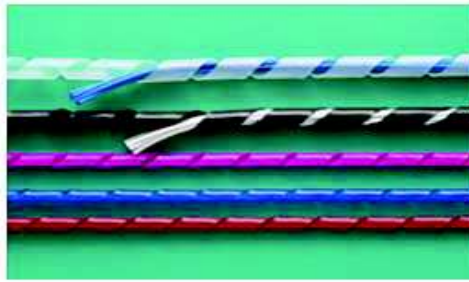
Part Number	Min. Expanded ID	Max. Recovered ID	Nominal Recovered Wall Thickness	Standard Pack of 1.2 or 1 metre length
RMW 12/3	12 mm	3 mm	1.5 mm	60 lengths
RMW 22/6	22 mm	6 mm	2.5 mm	30 lengths
RMW 27/8	27 mm	8 mm	2.5 mm	30 lengths
RMW 35/9	35 mm	9 mm	2.5 mm	30 lengths
RMW 40/12	40 mm	12 mm	2.5 mm	30 lengths
RMW 50/17	50 mm	17 mm	2.5 mm	30 lengths
RMW 72/22	72 mm	22 mm	2.5 mm	20 lengths
RMW 92/26	92 mm	26 mm	2.5 mm	15 lengths
RMW 130/35	120 mm	35 mm	2.5 mm	15 lengths

Note: For tubing with adhesive lining, please add an A after the part number (e.g.: RMW12/3A)

The herein given information corresponds to our actual knowledge and is deemed to be correct and reliable. But they do not represent binding properties. Customer and user have to decide autonomously on the application in the provide range. Under no circumstances are liable any eventual, indirect or consequential damages arising from the sales, resale, transfer, use or misuse of the product.

Our liabilities are limited to only in replacing products due to manufacturing defects.

Spiral Wrapping & Cable Tie Base



Item No.	O.D.	T	W	Wrapping Range	Packing
<input type="checkbox"/> KS-6N6	4.5	0.45	7.0	4~25	10 M / Bag
<input type="checkbox"/> KS-6N6L	6.0	0.52	7.0	4~25	
<input type="checkbox"/> KS-8N6	8.0	0.70	10.8	6~30	
<input type="checkbox"/> KS-10N6	10.0	0.70	11.4	7.5~30	
<input type="checkbox"/> KS-12N6	12.0	0.70	13.9	9~32	
<input type="checkbox"/> KS-15N6	15.0	0.80	15.0	12~35	
<input type="checkbox"/> KS-19N6	19.0	0.90	18.2	15~50	
<input type="checkbox"/> KS-24N6	24.0	0.90	19.6	20~100	



Item No.	L	W	H	Mounting Hole	T	Packing
HC-101	21.8	21.8	4.0		4.8	100 pcs / Bag
HC-102	28.6	28.6	5.3	5.0	5.5	