

2010

ASEC INDUSTRIES PTE LTD

No. 1 Upper Aljunied Link,
#08-02, Joo Seng Warehouse Block A, Singapore 367901

TEL: (65) 6383 4368 / 6284 2051

FAX: (65) 6383 4369

Email: shirleytan@asec.com.sg

Email: sales@asec.com.sg

Website: www.asec.com.sg

[EARTHING CATALOGUE]

Specification subject to change without prior notice

Table of Contents

Earth Rod.....	3
Earth Clamp.....	4
Earth Fitting.....	5
Earth Bond	6
Earth Junction Clamp & Tape.....	7
Earth Air Terminal	8
Earth Tape Clip	9
Earth Clamp.....	10

Earth Rod



Copper Rod

Rod Diameter	Length	Material	Cat.No.
5/8" & 3/4"	6 ft	Copper Cladded	HS-CU 428
5/8" & 3/4"	8 ft	Steel Rod	
5/8" & 3/4"	10 ft		

All sizes available for manufacture

Fittings

Couplings for Copper Rods

Rod Diameter	Conductor Material	Cat.No.
5/8" or 3/4"	Brass	BR 229
5/8" or 3/4"	Phosphor Bronze	BZ 329

Rod Driving Head for Copper Rods

Rod Diameter	Conductor Material	Cat.No.
5/8" or 3/4"	Brass	BR 230
5/8" or 3/4"	Leadad Gunmetal	BZ 330

Driving Studs for Copper Rods

Rod Diameter	Conductor Material	Cat.No.
5/8" or 3/4"	Steel	GI 502

Rod End Cap

Rod Diameter	Conductor Material	Cat.No.
5/8" or 3/4"	Brass	BR 512



Earth Rod Clamp



Rod To Tape Clamp (Type A)

Tape Conductor Size (mm)	Rod Diameter	Conductor Material	Cat.No.
25 x 3 - 6	5/8" or 3/4"	Aluminium Alloy	AL 115
25 x 3 - 6	5/8" or 3/4"	Brass	BR 215
25 x 3 - 6	5/8" or 3/4"	Leadad Gunmetal	BZ 315

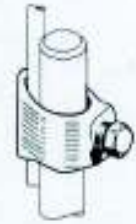


Earth Clamp



Rod to Cable Clamp

Tape Conductor Size (mm)	Rod Diameter	Conductor Material	Cat.No.
35 - 70	5/8"	Aluminium Alloy	AL 116
35 - 70	5/8"	Brass	BR 216
35 - 70	5/8"	Leaded Gunmetal	BZ 316



Rod to Cable Lug Clamp

Rod Diameter (mm)	Conductor Material	Cat.No.
16 or 20	Aluminium Alloy	AL 118
16 or 20	Brass	BR 218
16 or 20	Leaded Gunmetal	BZ 318



Cable or Wire Earth Clamp

Wire Conductor Size (mm)	Conductor Material	Cat.No.
6 - 25	Aluminium Alloy	AL 119
6 - 25	Brass	BR 219
6 - 25	Leaded Gunmetal	BZ 319



Two Side Tape to Rod Clamp

Tape Conductor Size (mm)	Rod Diameter	Conductor Material	Cat.No.
25 x 3 - 13	5/8" x 3/4"	Prospher Bronze	BZ 509



Rod to Cable to Tape Clamp

Tape Conductor Size (mm)	Rod Diameter	Conductor Material	Wire Conductor Size (mm)	Cat.No.
25 x 3 - 13	5/8" x 3/4"	Prospher Bronze	16 - 240	BZ 508



Earth Eyebolt

Rod Diameter	Conductor Material	Cat.No.
5/8" or 3/4"	Aluminium Alloy	AL 126
5/8" or 3/4"	Brass	BR 226
5/8" or 3/4"	Leaded Gunmetal	BZ 326





Static Earth Receptable

Rod Diameter	Conductor Material	Cat.No.
5/8" or 3/4"	Aluminium Alloy	AL 127
5/8" or 3/4"	Brass	BR 227
5/8" or 3/4"	Leaded Gunmetal	BZ 327



Copper Alloy U. Clamp

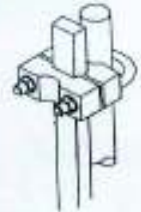
Nominal Rod Size	Max. No. & Conductor Size (mm ²)	Cat.No.
5/8" or 3/4"	1 x 25/70	HS 217
3/8" or 3/4"	2 x 25 x 3 copper tape	HS 317



UTC001



UCC001



Earth Plates



Copper Earth Plate

Conductor Size (mm)	Cat.No.
600 x 600 x 1.5	H.S. CU 426
600 x 600 x 3	
1000 x 1000 x 1.5	
1000 x 1000 x 3	



Copper Net Earth Plate

Conductor Size (mm)	Cat.No.
600 x 600 x 3	H.S. CU 427
1000 x 1000 x 3	



Earth Pits



Galvanized Hot Lid Inspection Earth Pit

Dimensions	Cat.No.
266mm(w) x 266mm(l) x 190mm(h)	H.S. CU 501
205mm(w) x 205mm(l) x 152mm(h)	H.S. CU 501A





Tape "B" Bond

Tape Conductor Size (mm)
25 x 3
25 x 3
25 x 3

Conductor Material	Cat.No.
Aluminium	AL 123
Naval Brass	BR 223
Leaded Gunmetal	BZ 323

All sizes available for manufacture



TWP Bond

Tape Conductor Size (mm)
25 x 3
25 x 3
25 x 3

Conductor Material	Cat.No.
Aluminium Alloy	AL 124
Brass	BR 224
Leaded Gunmetal	BZ 324



Copper Braid Tape Bond

Tape Conductor Size (mm)
25(w) x 3(t) 100(l)

Cat.No.
H.S. CU 425

All sizes available for manufacture



Oblong Test Clamp

Tape Conductor Size (mm)
25 x 3 - 12
25 x 3 - 12
25 x 3 - 12

Conductor Material	Cat.No.
Aluminium Alloy	AL 106
Brass	BR 206
Leaded Gunmetal	BZ 306

All sizes available for manufacture



WT Test Junction Clamp

Tape Conductor Size (mm)	Wire Conductor Size (mm)
25 x 3	35 - 70
25 x 3	35 - 70
25 x 3	35 - 70

Conductor Material	Cat.No.
Aluminium Alloy	AL 107
Brass	BR 207
Bronze	BZ 307



Cable Saddle

Wire Conductor Size (mm)
35 - 120
35 - 120
35 - 120

Conductor Material	Cat.No.
Aluminium Alloy	AL 108
Brass	BR 208
Bronze	BZ 308



Heavy Duty Saddle

Wire Conductor Size (mm)
35 - 95

Conductor Material	Cat.No.
Brass	BR 500

Earth Junction Clamp & Tape



TR Test Junction Clamp

Tape Conductor Size (mm)	Rod Diameter Size	Conductor Material	Cat.No.
25 x 3 - 12	5/8" or 3/4"	Aluminium Alloy	AL 109
25 x 3 - 12	5/8" or 3/4"	Brass	BR 209
25 x 3 - 12	5/8" or 3/4"	Phopher Bronze	BZ 309



DWR Test Junction Clamp

Wire Conductor Size (mm)	Rod Diameter Size	Conductor Material	Cat.No.
16 - 240	5/8" or 3/4"	Aluminium Alloy	AL 110
16 - 240	5/8" or 3/4"	Brass	BR 210
16 - 240	5/8" or 3/4"	Phopher Bronze	BZ 310



SWR Test Junction Clamp

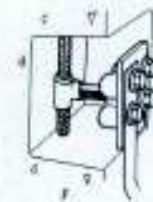
Wire Conductor Size (mm)	Rod Diameter Size	Conductor Material	Cat.No.
16 - 240	5/8" or 3/4"	Aluminium Alloy	AL 111
16 - 240	5/8" or 3/4"	Brass	BR 211
16 - 240	5/8" or 3/4"	Phopher Bronze	BZ 311

Conductors



Earth Point

Tape Conductor Size (mm)	Conductor Material	Cat.No.
25 x 3 - 12	Aluminium Alloy	AL 128
25 x 3 - 12	Brass	BR 228
25 x 3 - 12	Leaded Gummetal	BZ 328



Aluminium or Copper Tape

Tape Conductor Size (mm) XxY	Conductor Material	Cat.No.
20 x 3 or 25 x 3	Aluminium	AL 129
20 x 3 or 25 x 3	Copper	CU 429





**Allum to Copper Bimetallic Connector
& Copper to Copper**

Tape Conductor Size (mm) 20 or 25 x 3 - 6	Conductor Material Aluminium & Copper	Cat.No. BC-005
---	---	--------------------------



Flat Air Terminal



Multiple Earth Point

Rod Diameter Size 5/8" & 3/4" 5/8" & 3/4" 5/8" & 3/4"	Conductor Material Aluminium Brass Copper	Cat.No. AL 101 BR 201 CU 422
---	---	--



Copper Multiple Earth Point C/W Base

Rod Diameter Size 5/8" & 3/4"	Conductor Material Copper	Cat.No. H.S. CU 423
---	-------------------------------------	-------------------------------

All lengths available for manufacture



Air Terminal Flat Base

Rod Diameter Size 5/8" or 3/4" 5/8" or 3/4" 5/8" or 3/4"	Conductor Material Aluminium Alloy Brass Leaded Gunmetal	Cat.No. AL 102 BR 202 BZ 302
--	--	--



Air Terminal C/W Base

Rod Diameter 5/8" or 3/4" 5/8" or 3/4"	Rod Length (mm) 300 - 3000 300 - 3000	Conductor Material Aluminium Alloy Leaded Gunmetal	Cat.No. AL 104 BZ 424
---	--	---	------------------------------------



Air Terminal Slant Base



Rod Diameter Size
 5/8" or 3/4"
 5/8" or 3/4"
 5/8" or 3/4"

Conductor Material	Cat.No.
Aluminium Alloy	AL 103
Brass	BR 203
Leaded Gunmetal	BZ 303

Taper Pointed Air Rod

Rod Diameter	Rod Length (mm)
5/8" or 3/4"	300 - 3000
5/8" or 3/4"	300 - 3000

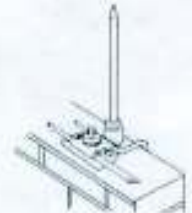
Conductor Material	Cat.No.
Aluminium	AL 100
Copper	CU 200



Air Terminal Base

Rod Diameter	Rod Length (mm)
5/8" or 3/4"	300 - 3000
5/8" or 3/4"	300 - 3000
5/8" or 3/4"	300 - 3000

Conductor Material	Cat.No.
Aluminium	AL 114
Brass	BR 214
Leaded Gunmetal	BZ 314



Flat Tape System



Tape Clip

Tape Conductor Size (mm)
 25 x 3 - 6
 25 x 3 - 6

Conductor Material	Cat.No.
Aluminium	AL 129
Naval Brass	BR 229



DC Tape Clip

Tape Conductor Size (mm)
 25 x 3 - 6 50 x 3 - 12
 25 x 3 - 6 50 x 3 - 12
 25 x 3 - 6 50 x 3 - 12

Conductor Material	Cat.No.
Aluminium Alloy	AL 121
Brass	BR 221
Leaded Gunmetal	BZ 321



Built In Tape Holdfast

Tape Conductor Size (mm)
 25 x 3 - 6 50 x 3 - 12
 25 x 3 - 6 50 x 3 - 12
 25 x 3 - 6 50 x 3 - 12

Conductor Material	Cat.No.
Aluminium Alloy	AL 122
Brass	BR 222
Leaded Gunmetal	BZ 322



	<h3>Square Test Clamp (Tape to Cable)</h3> <table border="0"> <tr> <td>Tape Conductor Size (mm)</td> <td>Cable Conductor Size (mm)</td> <td>Conductor Material</td> <td>Cat.No.</td> </tr> <tr> <td>25</td> <td>50</td> <td>Brass Leaded Gunmetal</td> <td>BR- 420 BZ- 421</td> </tr> </table> <p style="text-align: center;">All sizes available for manufacture</p>	Tape Conductor Size (mm)	Cable Conductor Size (mm)	Conductor Material	Cat.No.	25	50	Brass Leaded Gunmetal	BR- 420 BZ- 421	
	Tape Conductor Size (mm)	Cable Conductor Size (mm)	Conductor Material	Cat.No.						
	25	50	Brass Leaded Gunmetal	BR- 420 BZ- 421						
	<h3>Square Tape Clamp (Tape to Tape)</h3> <table border="0"> <tr> <td>Tape Conductor Size (mm)</td> <td>Conductor Material</td> <td>Cat.No.</td> </tr> <tr> <td>25 x 3 - 6 25 x 3 - 6 25 x 3 - 6</td> <td>Aluminium Alloy Brass Leaded Gunmetal</td> <td>AL- 105 BR- 205 BZ- 305</td> </tr> </table>	Tape Conductor Size (mm)	Conductor Material	Cat.No.	25 x 3 - 6 25 x 3 - 6 25 x 3 - 6	Aluminium Alloy Brass Leaded Gunmetal	AL- 105 BR- 205 BZ- 305			
	Tape Conductor Size (mm)	Conductor Material	Cat.No.							
	25 x 3 - 6 25 x 3 - 6 25 x 3 - 6	Aluminium Alloy Brass Leaded Gunmetal	AL- 105 BR- 205 BZ- 305							
<h3>Rounded Tape Clamp</h3> <table border="0"> <tr> <td>Tape Conductor Size (mm)</td> <td>Conductor Material</td> <td>Cat.No.</td> </tr> <tr> <td>25 x 3 - 12 25 x 3 - 12</td> <td>Brass Leaded Gunmetal</td> <td>BR- 204 BZ- 304</td> </tr> </table>	Tape Conductor Size (mm)	Conductor Material	Cat.No.	25 x 3 - 12 25 x 3 - 12	Brass Leaded Gunmetal	BR- 204 BZ- 304				
Tape Conductor Size (mm)	Conductor Material	Cat.No.								
25 x 3 - 12 25 x 3 - 12	Brass Leaded Gunmetal	BR- 204 BZ- 304								
<h3>Tee Junction Clamp</h3> <table border="0"> <tr> <td>Wire Conductor Size (mm)</td> <td>Conductor Material</td> <td>Cat.No.</td> </tr> <tr> <td>35 - 95 35 - 95 35 - 95</td> <td>Aluminium Alloy Brass Leaded Gunmetal</td> <td>AL- 112 BR- 212 BZ- 312</td> </tr> </table>	Wire Conductor Size (mm)	Conductor Material	Cat.No.	35 - 95 35 - 95 35 - 95	Aluminium Alloy Brass Leaded Gunmetal	AL- 112 BR- 212 BZ- 312				
Wire Conductor Size (mm)	Conductor Material	Cat.No.								
35 - 95 35 - 95 35 - 95	Aluminium Alloy Brass Leaded Gunmetal	AL- 112 BR- 212 BZ- 312								
<h3>Jointing Junction Clamp</h3> <table border="0"> <tr> <td>Wire Conductor Size (mm)</td> <td>Conductor Material</td> <td>Cat.No.</td> </tr> <tr> <td>35 - 95 35 - 95 35 - 95</td> <td>Aluminium Alloy Brass Leaded Gunmetal</td> <td>AL- 113 BR- 213 BZ- 313</td> </tr> </table>	Wire Conductor Size (mm)	Conductor Material	Cat.No.	35 - 95 35 - 95 35 - 95	Aluminium Alloy Brass Leaded Gunmetal	AL- 113 BR- 213 BZ- 313				
Wire Conductor Size (mm)	Conductor Material	Cat.No.								
35 - 95 35 - 95 35 - 95	Aluminium Alloy Brass Leaded Gunmetal	AL- 113 BR- 213 BZ- 313								
<h3>Aluminium Test Link Box</h3> <table border="0"> <tr> <td>Conductor Material</td> <td>Size (mm)</td> <td>Cat.No.</td> </tr> <tr> <td>Aluminium Alloy</td> <td>125 x 125 x 40</td> <td>H.S AA 011</td> </tr> </table>	Conductor Material	Size (mm)	Cat.No.	Aluminium Alloy	125 x 125 x 40	H.S AA 011				
Conductor Material	Size (mm)	Cat.No.								
Aluminium Alloy	125 x 125 x 40	H.S AA 011								